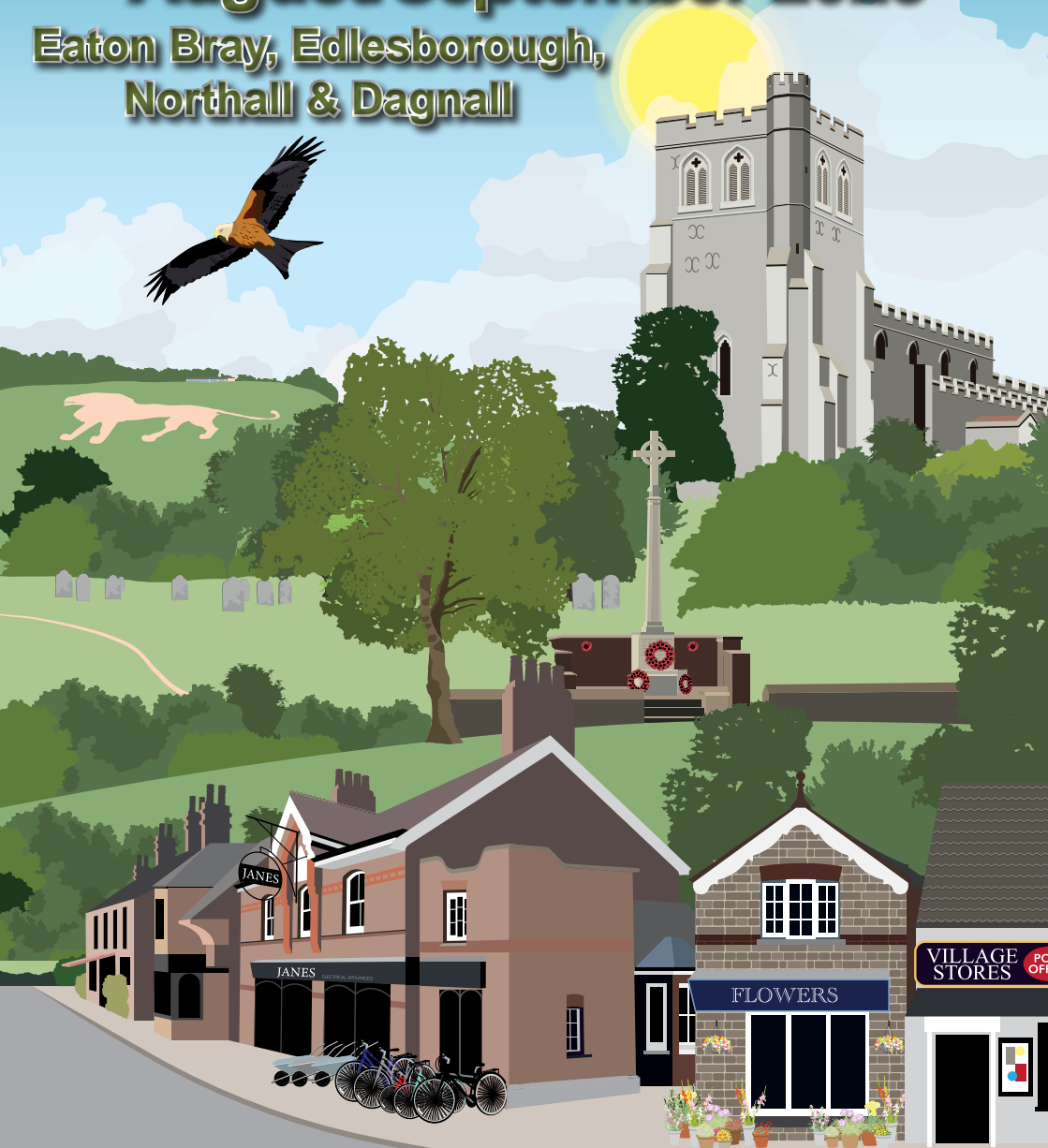


FOCUS

August/September 2023

Eaton Bray, Edlesborough,
Northall & Dagnall



Smart[®] AUTOMOTIVE



EXPERTISE, QUALITY & EXPERIENCE
EST 2003

Car Bodyshop, Service Workshop & MOT Bay



MOT TESTING
FOR ALL MAKES & MODELS

4 WHEEL ALIGNMENT
& TYRE FITTING

SPECIALISTS IN COMPLETE
CLASSIC CAR RESTORATION

DEALER TRAINED TECHNICIANS

EXTENSIVE EXPERIENCE IN
PRESTIGE CAR PAINTWORK & REPAIR

ACCIDENT & VANDALISM DAMAGE

INSURANCE WORK UNDERTAKEN

MOBILE BODY REPAIRS
ALLOY WHEELS - DENTS - BUMPERS
CHIPS - SCRATCHES - SCUFFS

Fully equipped vans that come
to your home or office

FREE COLLECTION & DELIVERY
LOAN CARS AVAILABLE



01582 664772 www.smartautomotive.co

Smart Automotive, Units 17 & 18 Icknield Way Farm, Tring Road, Eaton Bray LU6 2JX

SMART AUTOMOTIVE IS THE TRADING NAME OF SMART TOUCH (MK) LIMITED

Eaton Bray
Good Neighbours



Helpline:
07930 987064

Manned phone hours:
9am to 5pm, Monday to Friday
(An answering service is available for
out-of-hours calls)

Call us if you want help with getting
to the surgery/hospital, collecting
prescriptions, minor errands or d-i-y
jobs, form-filling, walking your pet,
on-line shopping support etc. or if
you would welcome our befriending
service.

*We help people of Eaton Bray and
adjacent villages*

The Focus Magazine Committee

Editor: Sally Siddons 01525 221733

34 Wallace Drive, Eaton Bray

Email: sallysid@hotmail.com

Business Advertising: Sally Taylor, Butler's
Folly, South End Lane, Northall LU6 2EX
01525 221576 & Angela Dunford 221944

Email advertising@thefocusmagazine.co.uk

Chair: Ken Coates

10 The Nurseries, Eaton Bray 220868

Circulation Manager: Angela Dunford
1 Knolls View, Leighton Road, Northall
01525 221944, angela.dunford29@gmail.com

Treasurer: Steve Dunford, 01525 221944

Committee Member: Sue Tucker, 01525
223004, susantucker053@gmail.com

Design and Layout: Tracey Moren
(Moren Associates Limited) 01525 229695

Printed by: PRIORITY Press
Dunstable 01582 699851

Copy for publication to the Editor by the
10th of the month

*Focus accepts no responsibility as to the
accuracy or content of any advertising or articles
published in 'this' magazine, neither do they
reflect the opinion of members of the Committee.*

*© Articles published in Focus may not be
reproduced without permission.*

**Focus would like to remind
contributors that the deadline
for articles is the 10th of the
preceding month**

Kindly Note

*If the event you wish to advertise falls in the first
week of the month, it is advisable to get the details
into Focus a month earlier. The magazines are
not delivered from the printers until the first of the
month, therefore it takes a few days for them all to
be circulated throughout the village.*

✍️ Editor

EATON BRAY
PARISH
COUNCIL

**Becoming a
Parish
Councillor
For Eaton Bray**

"I want to be
part of
decisions
affecting my
area"

"I'm
passionate
about
improving
my village"

"I want to have an
influence on
Parish Council
spending"

BECOME A PARISH COUNCILLOR

For more details, please contact the Parish Clerk
(t) 07931 479663 - (e) clerk@ebpc.co.uk - (w) ebpc.co.uk

Village Diary



Weekly

- Mon-Sun St. Mary's Edlesborough opening times are currently very limited
Please see notice board and website
- Mon-Fri (term) Eaton Bray Pre-school, Eaton Bray Lower School, 01525 220468, admin@eba.ec
- Mon-Fri (term) Dagnall Under 5's, Dagnall Village Hall, 9.15am - 12.15pm, Mrs Ann Tobin 07816 358342
- Mon-Fri (term) Edlesborough Primary Academy Pre-School, 01525 220431, epamanager@epa-primary.org
- Mon-Fri (term) Totternhoe Pre-school, Totternhoe CE Academy, 01582 662959, totternhoeoffice@tot.dsamat.co.uk
- Mondays Pilates, 10.45am, Totternhoe Memorial Hall, Lisa: 07832 230774
- Mondays Dagnall Community Choir, All Saints Church 7.45-9.45pm, w:dagnall-community-choir.co.uk
- Mondays (term) Movement and exercise classes with a dance flavour, Northall VH 2-3.30. Jan 01442 864271.
- Mondays KFPA ISTD ballet classes, Edlesborough Memorial Hall 4pm-6.30pm (4years+)
Contact Kiri 07988161043 or visit Facebook page 'KF PerformingArts/KFPA' for info
- Mondays Cubs (8-10 ½ years old), 6.30pm - 8pm, 1st Eaton Bray & Edlesborough Scout Hut, High Street, Edlesborough. Contact Liz Coates 01442 842550
- Mondays Yoga, 6:45pm, Edlesborough Memorial Hall, contact 07837 727302
- Mondays Barre, 8pm, Edlesborough Memorial Hall, contact 07837 727302
- Mondays Eaton Bray Tennis Club - 4-7pm mini / junior tennis coaching
- Mondays Eaton Bray Tennis Club - 7-8pm Adult Coaching 'Get Back Into Tennis'
- Tuesdays Pilates, 10-11am, Eaton Bray Village Hall, Nicky Roussou 07861 162680
- Tuesdays Totternhoe Baby & Toddler Group, 9.30-11.15am, St. Giles Church Hall, Ruth Allen, 01525 222468 or 07796 265174 or email ruthallen002@gmail.com
- Tuesdays Tap & Ballet Classes, JoAnn Latus School of Dance, 4-8pm, Eaton Bray VH, 07800 518654
- Tuesdays Coffee Morning, Bring & Buy, Table Top Sale, 10-11:30am, Salvation Army Hall, Booth Place, Eaton Bray
- Fortnightly
- Tuesdays Jazzercise 9:15-10am, Eaton Bray VH, Annis, annisjazzercise@gmail.com 07447 409666
- Tuesdays Eaton Bray Tennis Club - 6-7.30pm Social play for all adults
- Tuesdays Berkhamsted Taekwon-do Kids, 5.45pm-6.30pm, Dagnall Village Hall, 07813 755785
- Tuesdays Berkhamsted Taekwon-do Adults, 6.30pm, Dagnall Village Hall, 07813 755785
- Tuesdays Movement is Medicine Pilates, 1:30-2:30pm, Billington Hall, moira@stjudesclinic.com
- Wednesdays Pilates, 8pm, Northall Village Hall, Lisa: 07832 230774
- Wednesdays Northall & District Age Concern Wednesday Club, 10am - 3pm, Northall Village Hall, Contact Dee on 07854 230243
- Wednesdays Art Course online 9.30 -11.30 am, contact Loma Moore 07896 619660
- Wednesdays Art Course, Bellows Mill Eaton Bray, 2-4.30pm, contact Loma Moore 07896 619660
- Wednesdays Jazzercise 7:30-8:30pm, Eaton Bray VH, Annis, annisjazzercise@gmail.com 07447 409666
- Wednesdays Eaton Bray Tennis Club - 5-6 pm 9-11 years old tennis coaching & U16 Beginners tennis
- Wednesdays Pilates 6-7pm, Eaton Bray Village Hall, Heather Holmes, 07305 023077 pilateswithheather@mail.com
- Wednesdays Movement is Medicine Pilates, 7-8pm, & 8:05-9:05pm, Billington Hall, moira@stjudesclinic.com
- Thursdays KFPA Street dance classes, Edlesborough Memorial Hall 4.15pm-6.30pm (4 years+)
Contact Kiri 07988161043 or visit Facebook page 'KF PerformingArts/ KFPA' for info
- Thursdays Berkhamsted Taekwon-do Adults 6.30pm, Dagnall Village Hall, 07813 755785
- Thursdays Beavers (6 to 8 years old), 6.15-7.30pm, 1st Eaton Bray & Edlesborough Scout Hut, High Street, Edlesborough. Contact: ebebeaverleader@ebescouts.co.uk
- Thursdays Explorers Scouts (14-18 years old), 8pm-9.30pm, 1st Eaton Bray & Edlesborough Scout Hut, High Street, Edlesborough. Contact Simon Betts, simon_betts@hotmail.com.
- Thursdays Eaton Bray Methodist Church Social Afternoons, 2 - 4pm, All Welcome
- Thursdays Retro Line Dance Class. 11.15am to 12.45pm. Eaton Bray Village Hall. Beginners welcome.
www.jukeboxjunction.co.uk info@jukeboxjunction.co.uk 07864212171

Village Diary

- Fridays Stay & Play toddler group, 'Musical Monkeys' at the Eaton Bray Village Hall, 10-11.30am, £4.50 for one adult and child, £1 for extra children/adults, 0-6 months free
- Fridays Tap & Ballet Classes, JoAnn Latus School of Dance, 4-8pm, Eaton Bray VH, 07800 518654
- Fridays Jazzercise 9:15-10am, Eaton Bray VH, Annis, annisjazzercise@gmail.com 07447 409666
- Fridays Scouts, (10½ to 14 years old), 7.00-8.30pm, 1st Eaton Bray & Edlesborough Scout Hut, High Street, Edlesborough. Contact Mark Owen, ebescoutleader@ebescouts.co.uk, 07899 892344
- Fridays "Little Luvvies" baby ballet classes, 10am-11.30am, Northall Village Hall. Contact Emma Whittemore on 01525 376124
- Fridays Movement is Medicine Pilates, 10-11am, Great Gaddesdon Parish Hall, moira@stjudesclinic.com
- Saturdays Jazzercise 9-10am, Eaton Bray VH, Annis, annisjazzercise@gmail.com 07447 409666
- Saturdays KFPA Musical theatre classes, Edlesborough Memorial Hall 9.30-10.30am (4years+)
- Sundays Contact Kiri 07988161043 or visit Facebook page 'KF PerformingArts/ KFPA' for info
- Sundays Sunday Worship at 11am, Edlesborough Baptist Church, Moor End, LU6 2FL. Contact: 01525 222064 or edlesboroughbaptistchurch@gmail.com
- Sundays Karate for kids & adults, 2:30-4pm & 4:30-6pm, Eaton Bray VH, Contact 07500 007779
- Sundays Eaton Bray Tennis Club - 10am -12pm Social play for all adults

Monthly

- 1st Monday Eaton Bray Parish Council Meeting, 7.30pm, The Coffee Tavern (except Jan-2nd Monday)
- 1st Monday Eaton Bray W.I. Meeting, 7.30pm. Eaton Bray Methodist Church Hall. Contact Margaret Jones on 01525 220991
- 1st & 3rd Tues Dunstable & District Orbit (social and charitable) Club meet at Dunstable Rugby Club at 8pm. For details contact 01525 222441 or 01582 755147
- 1st Saturday St. Mary's Church, Eaton Bray Coffee Morning, 10:30am - 12 noon (July held on 2nd Saturday)
- 1st Saturday Book Swap at St Mary's Eaton Bray, 10:30am -12 noon (July held on 2nd Saturday)
- 2nd Monday Film Society, Sep to June, 2pm, Eaton Bray Village Hall, Graham Chappell 07980 321977
- 2nd Tuesday Dunstable & District Local History Society meeting, 7.45pm, Methodist Church Hall, Dunstable
- 2nd Tuesday Edlesborough W.I. Meeting, 7.30 pm, Edlesborough Memorial Hall. Contact Sue Bingham 01525 222522
- 3rd Thursday Edlesborough Parish Council Meeting, 7.30pm, Pavilion or as stated in Edlesborough PC News
- 2nd Friday Leukaemia Research Coffee Morning 2, Dunstable Road, Dagnall 10.30 a.m. all welcome. No meeting in September, June plant bring and buy, December Sherry & mince pies
- 3rd Sunday Lunch club 11.30 to 2.00pm, Eaton Bray Village Hall, Chris Hewitt 222288
- Last Saturday Coffee Morning, 10:00-12 noon, Edlesborough Methodist Church

This Month's One Off/Annual/Irregular Events

- 9th Aug Don Quixote play by Quill & Inkling Theatre Company, 7pm, Edlesborough Church Book: www.quillandinkling.com
- 13th Aug Hymns in the Churchyard, 3pm, St. Mary's Church, Eaton Bray
- 19th Aug Totternhoe Village Show, 2:15pm, St. Giles Village Hall, Totternhoe
- 2nd Sep Quiet Morning, 9:30am, All Saints Church, Dagnall
- 9th Sep Heritage Open Day, 2-5pm, St. Mary's Church, Eaton Bray
- 11 & 18 Sep Defibrillator & CPR Training Sessions, 7pm Edlesborough Pavilion, Contact Penny Pataky (Parish Council Clerk) on 01525 229358
- 29th Sep Macmillan World's Biggest Coffee Morning, 10am-12 noon, St. Mary Church, Eaton Bray

The paper used for this magazine is sourced from sustainable forests and can be recycled



Focus is online at www.thefocusmagazine.co.uk

Village Info



EDaN Community Transport
Peter Williams: 01442 842506

Defibrillator Locations



These units are registered with the Ambulance Services. To access them, please phone 999. You will be given the access code and the location of the unit will be confirmed. The defibrillator is easy and safe to use. The units can be found on the outside walls of the following locations:

Dagnall: Red Lion Public House & Munns Farm Shop

Eaton Bray: The Coffee Tavern

Northall: The Swan Public House

Edlesborough: Edlesborough Memorial Hall & Baptist Church, Summerleys

Police Contact Numbers...

making neighbourhoods safer together

General Assistance (Recommended Number): 101 Emergency: 999

Bedfordshire Police (Eaton Bray)

T/Sgt 6268 Amy Ison, Leighton Buzzard Community Policing Team, Duncombe Drive, Leighton Buzzard, Telephone: 01582 473408

Thames Valley Police (Edlesborough, Dagnall & Northall)

PCSOs Tina Hobson & Megan Dean

Charlotte Cottage, 73 Leighton Road, Wing LU7 0RD

Email: greatbrickhillwingivinghoenhpt@thamesvalley.police.uk

To report non urgent crime: www.thamesvalley.police.uk

Village Hall Booking Contacts

Northall: Lorna Cabbage Tel: 07857 318696 www.edlesborough-pc.gov.uk/nvh

Email: northallvhbookings@gmail.com

Eaton Bray: Norman Lee Tel: 07975 797202

Email: bookings@ebvh.co.uk Website www.ebvh.co.uk

Dagnall: Bev Way 07875 462128 & Trish Owen 07762 151364

Email DVH_Bookings@outlook.com

Edlesborough Memorial Hall: Penny Pataky, Tel: 01525 229358

Email: manager@edlesborough-pc.gov.uk



FREE Defibrillator & CPR Training Sessions



Representatives from South Central Ambulance Service will be holding a two FREE training session for residents of Edlesborough Parish.

The sessions will give advice on how to use an AED and give CPR.

The sessions only take about 90 mins and there will be plenty of hands-on practice.

The sessions will take place in **Edlesborough Pavilion** commencing at **7pm on Monday 11th and Monday 18th September.**

Spaces are limited and will be allocated on a first come first served basis.

Anyone wishing to attend should register their interest with Penny Pataky the Clerk to Edlesborough Parish Council who can be contacted on 01525 229358 or clerk@edlesborough-pc.gov.uk



Eaton Bray with Edlesborough Parish News

Vicar: Rev'd Joy Cousins

The Vicarage, 11 High Street, Eaton Bray - Tel: 01525 220261

Associate Priest: Rev'd Stephen Burge

Church Warden & Pastoral Matters: Catherine Hayden (01525 220527)

Reader: Gordon Gray (01525 220136)

Website: www.stmaryseatonbray.org.uk Facebook: St Mary's Eaton Bray

Do you have a favourite hymn? I'm sure that many of us do. One of my personal favorites is *I Heard the Voice of Jesus Say*, which is often set to the tune ("Kingsfold"), a tune harmonized by Ralph Vaughn Williams and published in *The English Hymnal*. The tune Kingsfold was originally used for a folksong called *Lazarus and Dives*, a popular reworking of the Biblical parable (Luke 16:19-31), it is a very simple, but memorable tune and the kind of thing that Vaughn Williams liked to include in his hymnal. The tune was obviously one that had a deep effect on Vaughn Williams as he turned it into his *Five Variants on Lazarus and Dives*, which gets an outing on classical radio quite frequently.

Hymns have been an important part of Church life from its very beginnings. The disciples are said to have sung a hymn as they headed to the Mount of Olives before Jesus's crucifixion (Matt 26:30), in his *Acts of the Apostles*, Luke describes the early Christian community engaging in "prayer and singing hymns" (Acts 16:25), and St. Paul often commends the singing of hymns and spiritual songs (e.g. Eph 5:19; Col 3:16). These hymns were probably psalms or psalm-like texts, which had formed an important part of Jewish worship and were taken up by early Christians.

The use of hymns continued into the life of the early Church, with people like St. Ephrem the Syrian (d. 373) writing a great many hymns, some of which have made their way into modern hymnbooks, such as his *Strengthen for Service*. These hymns would have been sung rather differently to the way we sing hymns now, and they probably would have been chanted by a soloist or in unison by a choir. But, nevertheless, many in the early church understood the power that combining words and music could have on congregations. During the Reformation, when people began to engage with the Bible in English, one of the first things to emerge were metrical psalms – these no longer needed to be chanted in plainsong in Latin, but were transformed into congregational singing in the vernacular. One of the most famous of these is *The Lord's My Shepherd, I'll Not Want*, which comes from the Scottish Psalter of 1650. These metrical hymns soon developed into what we would recognize as hymns.

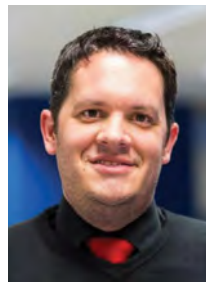
Setting words to a tune can often make them much more memorable. A good tune can also reach into our hearts and move us emotionally. This is something that Charles Wesley understood very well, leading him to write a great number of hymns with powerful words and stirring music. Modern hymn writers like Graham Kendrick and Stuart Townend also show that hymns still play an important part in worship and that they can be reinvented for every generation.

On Sunday 13th August at 3pm, Churches Together will be holding "Hymns on the Green" in the churchyard of St. Mary's, Eaton Bray (note that it won't be on

Edlesborough Green this year), where we will be rejoicing in the tradition of hymn singing and looking at the stories behind some of our favorite hymns. There will be refreshments afterwards! So, this month, I invite you all to think about your favourite hymn. How does it move you? How does it impact your faith? What do the words say and why are they important to you? But most importantly, have a good sing!

God bless,

✍️ Rev'd Stephen Burge



SERVICES AT ST. MARY'S CHURCH, EATON BRAY

SUNDAYS: 10am PARISH HOLY COMMUNION

(apart from the third Sunday - see below)

**On the First and Third Sundays of each month there is
HOLY COMMUNION at 8am**

**On the Third Sunday of each month there is a
WORSHIP SERVICE FOR EVERYONE at 10am, a shorter less formal service**

**WEEKDAYS: Wednesday at 10am HOLY COMMUNION
EVERYONE IS WELCOME AT THESE SERVICES**

Details and ONLINE WORSHIP: www.stmaryseatonbray.org.uk

Dagnall Church Services

Sun. 20th August 10.30 am Holy Communion

Sat. 16th September 10 am – 12 noon Harvest Brunch

Sun. 17th September 10.30 am Holy Communion

For any queries, please contact:

Philip Lee on 07977234453 or

Dorothy Green on 01442 843237



Carnival Tea Tent 2023

The weather didn't look great early morning however after the initial rain (whilst the tea tent was erected) the clouds parted and although sunshine was in short spurts it remained dry. It certainly didn't stop anyone coming to join in the fun.

Our early morning volunteers worked hard to get everything ready; we took our first order around 10:15 am. From then on, there was a continuous flow of people wishing to enjoy hot and cold drinks, and a variety of savoury and sweet treats. We welcomed new volunteers to our crew who soon learnt how busy our day is. We are delighted to say we did even better than last year by raising just over £2,100!

Thanks to everyone who was involved we simply couldn't do it without them all.

✍️ Karen, Julie & Sue



Hymns In the Churchyard



Sunday 13th August 3pm
St. Mary's Eaton Bray Churchyard
with the
Salvation Army Band
In church if bad weather
Bring chairs to sit on
Refreshments will be served afterwards



heritage open days

At St Mary's Church, Eaton Bray
September 9th
2 – 5pm

Creativity Unwrapped
Celebrating Stained Glass

Paint your own glass
Lace making demonstration
Children's activity
Church records will be available
Have fun doing a quiz
Local History

There is no charge for this event
Refreshments available.



The North Chilterns Group of Parishes



Quiet Morning

Saturday 2nd September 2023

All Saints Church, Dagnall

Coffee at 9.30am for 10am start

To be led by the Revd Canon Grant Fellows with 2 short presentations, each followed by an opportunity for prayer, calm and reflection in these peaceful surroundings.

Further coffee available – donations welcomed

Ending with Eucharist at 12 noon

All are welcome!



UNICORN WINDOWS LTD

UNIT 3 YOUNGS INDUSTRIAL ESTATE
STANBRIDGE ROAD, LEIGHTON BUZZARD
BEDS LU7 4QB

ESTABLISHED 1994

YOUR LOCAL HOME IMPROVERS



- ✓ DOORS; COMPOSITE, ALI AND UPVC
- ✓ CONSERVATORIES
- ✓ ORANGARIES AND GLAZED EXTENSIONS
- ✓ CAT FLAPS/DOG FLAPS
- ✓ BI-FOLD DOORS
- ✓ PORCHES
- ✓ CLADDING
- ✓ REPAIRS - INCLUDING REPLACEMENT GLASS

- ✓ WINDOWS; UPVC AND ALUMINIUM
- ✓ SOLID ROOF / ROOF CONVERSIONS
- ✓ CONSERVATORY REFURBISHMENTS
- ✓ SOFFITS, FASCIAS AND GUTTERING
- ✓ LANTERN ROOFS AND SKYPODS
- ✓ FLUSH SASH WINDOWS
- ✓ SLIDING DOORS
- ✓ AND MORE..






CONTACT US
FOR MORE INFO OR TO ARRANGE YOUR FREE, NO OBLIGATION QUOTE

01525 854272
sales@unicornwindows.co.uk








Moren Associates
Technology Services

Technology Support for Home and Business

Onsite or Remote Support



PCs, Smartphones, Tablets, Printers
Broadband, Internet, WiFi, Email
Security Guidance
Virus Protection & Removal
Upgrades & Installations
Data and System Recovery
Hardware & Software Troubleshooting
Home & Office Network Setup & Support






01525 229695 or 07950 597962
support@morenassociates.co.uk
Free initial consultation

Problem Solving:

Virus & Spyware Removal
Internet & Email Assistance
Fault Diagnostics
Repairs & Upgrades
Slow Running PC's

Services:

PC & Mac Support
Wired & Wireless Networks
Data Recovery
Install & Set-up
Health Checks

On-site Visits:

Office Hours &
Evenings - by appointment

Sales:

Desktops, Laptops & Tablets
Printers & Peripherals
Software

For friendly advice call John Wallace

07968 536068 or 01525 261381

Email: john@computamation.co.uk

Web: www.computamation.co.uk

9a Lower Way, Great Brickhill, Buckinghamshire. MK17 9AG

**Computamation
Services Ltd
Established. 1999**

"Excellent
experience.
I nearly fell
asleep whilst
having my fillings
done!

Very reassuring
- no rush.

I was made to
feel completely
at ease.

Thank you!"
- R.R.



floss and smile
gentle dentistry

"Without doubt
the most
competent,
gentle & lovely
dentist in the
Northern
hemisphere! I
won't see
anyone else.

Thank you from
a nervous
patient."
- M.B.

Floss and Smile Dental Practice

Edlesborough/Eaton Bray

Telephone: 01525 223175

Tring Road/Harling Road Roundabout
Eaton Bray, LU6 2LA

www.flossandsmile.co.uk



General Family Dentistry * Implants * Crowns * Bridges * Dentures * Hygienist *
Smile Makeovers * Tooth Whitening * Straight Teeth *

0% Finance

Dr Alpa Johar (GDC 111350) & Associates



For all your painting & decorating requirements
 Domestic and Commercial
 call Max for a free estimate with no obligation
maxbro@btinternet.com

DEEP CLEAN

Simply the BEST Carpet & Upholstery
 cleaning you can get

- The most modern, up-to-date equipment
 - Hot Water Extraction
 - Stain Removal Service
- Most of my work is recommendations or repeat business
- I carry my own water and remove all waste water
- Commerical, Industrial and residential Carpet & Upholstery Cleaning service

Please Call Darren Batchelor for a free quotation on:

**01525 851 811 or
 Mobile 07790 034818**

Email : sales@deep-cleaners.co.uk
 Website : deep-cleaners.co.uk

Approved Prochem Trained

N.D.S. General Building and Plumbing

Kitchens and Bathrooms:-
 Design + Supply or just Installation
 All aspects of building work and
 property maintenance undertaken
 Can also replace steamed up/misty

Double Glazing

Please call Neil Scott:-

07946 626 564 / 01525 221470

For Free Estimate. All work considered

No job too small

(30+ Years Experience)



Patricia's Cuisine

Catering For All Occasions

- Buffets, Dinners •
- Christenings, Weddings, Funerals •
- Promotions & Business Lunches •

For Enquiries & Menu

Meadside Farm, 104 High Street,
 Eaton Bray, Bedfordshire, LU6 2DP

Telephone: 01525 222174
www.patriciascuisine.co.uk



David John Harris

Green Fingers



(Established 1992)

All Fencing Work • All Gates • Paving • Patios
 Driveways • Shingle • Hedge Setting and Cutting
 Grass Cutting • Turfing Specialist • Exterior
 Painting Service • Sheds Small Building Work
 Trees & Shrubs Supplied

Tel/Fax: 01525 221745
Mobile: 07889 143713

Dominic Woolcott

Painter & Decorator



- Internal & External
- Plastering & Coving
- Insurance Work
- 20 Years Experience
- Competitive Rates

**For a professional job call:
01525 229682 or 07747 042879**



NEIL HODSON ASSOCIATES^{LTD}

STRUCTURAL ENGINEERING | ARCHITECTURAL SERVICES

Comprehensive design service for Building and Construction

- Architectural & Structural Designs
- Extensions • Alterations • Loft Conversions • Defects and Repairs
- Planning Permission • Building Regulation Consents • Listed Building Consents

Village Based | Established 33 years
01525 222462 | 07845 950594 | Also in Tring

P. DYER ELECTRICAL

For all your Electrical & Testing & Inspection needs

- All Testing & Inspection
- CCTV Systems
- Electric Vehicle Charging
- Rewires
- Security Systems/Lighting
- Fuse Boards
- LED & Low Energy Lighting
- Fault Finding/Repairs

Fully insured, Part P registered, all work guaranteed.
Fast, friendly and reliable local electrician. For a free,
no-obligation estimate, call Paul on:

Tel: 01525 222109

Mobile: 07850 682815

www.pdyerelectrical.co.uk



Lee Hutt 25 YEARS
Heating & Plumbing Services

Bathrooms
DESIGN & INSTALLATION
TILING
HEATING
TAPS
Leaks
CALL OUTS
Free Estimates

01525 222145 07971 559185

The advertisement for Lee Hutt Heating & Plumbing Services is a blue square with white text and icons. It features a list of services including Bathrooms, Tiling, Heating, Taps, and Leaks. At the bottom, there are two phone numbers: 01525 222145 and 07971 559185. The company name and '25 YEARS' anniversary are at the top.

CHIROPODY HOME VISITING PRACTICE
Julia Reading, BSc(Hons)
17 years experience
* Corns * Hard skin * Verrucae
* Thickened/Ingrowing nails
* Nail cutting * Diabetic feet
Please telephone: 0774 647 2781
for more information or to make an appointment

The COLLEGE of PODIATRY registered hcpc www.hcpc-uk.org

The advertisement for ChiroPoddy Home Visiting Practice features a photograph of hands being examined. The text lists the practitioner's name, Julia Reading, her qualifications, and 17 years of experience. It also lists various services such as corns, hard skin, verrucae, and nail cutting. Contact information and registration details are provided at the bottom.

Anne Johnson Osteopath
6 Moor End, Eaton Bray

Back, neck and joint pain
Postural tension and headaches
Arthritic and other muscle and joint problems
07957 250682
Book by phone or online
www.anne-johnson.net

The advertisement for Anne Johnson Osteopath includes a small logo of a hand and a stylized 'A'. The text provides the practitioner's name, address, and a list of services including back, neck, and joint pain, as well as postural tension and headaches. Contact information and the website are also included.



Steve the Mower Man

Steve Johns
 All mowers and garden machinery
 repaired and serviced
 Collection and delivery available
07720 828166

Will Kimberley
Garden Services
01442 255784

Phone for a free no obligation written estimate
wkgardenservices@btconnect.com

- High hedges a speciality
- Fences erected and repaired
- General garden tidy up's
- In fact any job in the garden!

GRASS ROOTS
GARDEN MAINTENANCE

TREE SURGERY, HEDGE PRUNING,
 SELECTION SUPPLY AND PLANTING OF
 TREES, SHRUBS AND HEDGES.
 REGULAR MAINTENANCE/ONE-OFF JOBS
 (Fully Insured)
Brian McMahon NCH (Arb)
01525 221960

S M Reilly & Son Ltd
General Builders & Contractors
 Turning Your House into
 a Home Since 1987



All aspects of the building trade undertaken

- *Extensions*Hard Landscaping*
- *Windows, Doors & Conservatories*
- *Fitting of Aluminium Bi-fold Doors*
- *Kitchen & Bathrooms*Drives*
- *Loft Conversions*

01525 221740 07970 637511



DM SECURITY

Commercial & Residential Alarm Systems

CCTV • Access control

Intruder Alarms • Locks

Electrical Installations

Fuse Boards • Re-wires

John Dorman: 07483 872017
 Chris Mahoney: 07801 552113
 20 Slicketts Lane, Edlesborough,
 Dunstable, Beds, LU6 2JD

toni's tootsies



mobile foot health care




- Fungal Infections**
- Ingrowing Toenails**
- Callus/Hard Skin**
- Cracked Heels**
- Nail Reconstruction**
- Verrucas**
- Nail Trimming**
- Corns**

Toni Nash is a fully qualified Foot Health
 Practitioner based in Slapton, Bucks...
 and she's ready to take your Call!

07484 749393
tonistootsies@gmail.com
www.tonistootsies.co.uk



01525 851080 .CO.UK 07973 167779

ALL TYPES OF SIGNS
VEHICLE SIGNS & MAGNETICS
BOARDS & BANNERS
STICKERS
BUSINESS CARDS
PRINTED & EMBROIDERED
CLOTHING

12 HARMILL IND EST LEIGHTON BUZZARD LU74FF

!AMAZING New Website!
www.pinstripes1995.co.uk

Join us on Facebook – **PINSTRIPES 1995**

WASHING MACHINE REPAIRS

ALSO
DISHWASHERS, TUMBLE DRIERS,
AND ELECTRIC COOKERS



Call
ANDERSON D.R.S.

01582 665764

www.andersondrs.co.uk
SALES AND RENTALS AVAILABLE

Established over 20 Years

DUNCAN TOMBLIN **TREE SURGEON**

Forestry Contractor • Tree Felling
Crown Reduction & Thinnings
Deadwooding • Hedge Cutting
Stump Grinding • Site Clearance
Private Agriculture Fencing Contractor
Chipper & Stump Grinding Hire
Digger Hire

FULL PUBLIC LIABILITY INSURANCE
FREE ESTIMATES

'The Best Choice For Your Tree'

TEL: (01525) 221946
MOBILE: (07802) 410728

12 Greenways, Eaton Bray, Beds

For a top quality
decorating job call

Marc Flack

01442 842639 (Dagnall)

Trading locally for over 15 years
References are available.

"Pupils are unfailingly proud of their school"
Ofsted, 2019

Ofsted

Good
Provider



Eaton Bray Academy is a happy, inclusive family where pupils and community are at our heart. Together we inspire children to be curious and develop a genuine love of learning to provide strong foundations for their future.

Wrap Around Care

We are pleased to provide a flexible, happy and stimulating before and after school club.

Breakfast and after school snacks are included.

- 🕒 7.30 - 8.50am Monday to Friday
- 🕒 3.30 - 5.30pm Monday to Friday

We have availability in most classes for pupils from the term after they turn two to Year 6.

Contact us to arrange a tour of our lovely village primary school.

Eaton Bray Academy

01525 220468
admin@eba.ec

www.eatonbrayacademy.co.uk





**EDLESBOROUGH SURGERY &
PITSTONE VILLAGE HEALTH CENTRE,
2023 FLU CAMPAIGN**

If you are eligible, please feel free to attend any of the clinics below.
We are running open clinics with no appointments necessary

Initial	clinics
EDLESBOROUGH	PITSTONE
SATURDAY SEPTEMBER 23rd 0830 – 12.30	WEDNESDAY SEPTEMBER 27 th 0830 – 1230 & 1330 - 1700
SATURDAY OCTOBER 7 th 0830 – 12.30	WEDNESDAY OCTOBER 4 th 0830 – 1230 & 1330 - 1700

Don't forget, when you receive your flu vaccine at your GP surgery, we will also check if you have any other vaccines and checks due.



Patients eligible for Flu vaccine

- all those aged 65 years and over
- those aged 6 months to under 65 years in clinical risk groups (such as diabetes, COPD, coronary heart disease, heart failure, MND, MS) Messages will be sent to these patients to invite them to clinic
 - aged 2 and 3 years on 31 August 2023
 - pregnant women
- carers, those in receipt of carer's allowance or main carer of an older or disabled person
 - close contacts of immunocompromised individuals
 - eligible school aged children will be vaccinated at school



**Birds of Bray
Newspapers wanted regularly
Please call Chris or Sue Mitchell
on 01525 221128 who can collect
Answer machine in use if unavailable**

EATON BRAY PARISH COUNCIL

Eaton Bray Parish Council Focus Report July 2023

A full copy of the minutes for Eaton Bray Parish Council can be found on our website: www.ebpc.co.uk. A hard copy of the minutes can also be viewed on the Parish Council's notice board at The Coffee Tavern.

Parish Council Website

To keep up to date with what is happening in your parish, you can get all Parish Council news and updates from the Parish Council website. The website has all Parish Council meeting agendas, minutes, financial documents and contact information as well as official sponsored events/initiatives and is the official council communications website. Visit it here www.ebpc.co.uk

FixMyStreet

CBC have a reporting system to make reporting easier, quicker and more accurate. To report and track highways and environment problems go online/use the FixMyStreet app: <https://fixmystreet.centralbedfordshire.gov.uk/>

The Meads Allotments: Allotment Inspection – September 2023



The allotment inspection is due to be carried out on Tuesday 12th September 2023.

Date subject to change, please check the Parish Council website for any updates.

EATON BRAY PARISH COUNCIL MEETING

Held on Monday 5th June 2023, from 7pm

(Minutes ratified at the Parish Council Meeting, Monday 3rd July 2023)

Central Bedfordshire Council (CBC)

Your Ward Councillor: Cllr Philip Spicer

Email: Philip.Spicer@centralbedfordshire.gov.uk

CBC Website: www.centralbedfordshire.gov.uk

CBC Email: customers@centralbedfordshire.gov.uk

CBC Customer Services: 0300 300 8301

Bedfordshire Police

- For general Police contact/enquiries: non-emergency **call 101**
- For emergencies: **call 999**

Planning Applications & Appeals – May/June 2023

A copy of the Parish Council's response to planning applications can be seen on the Parish Council website or obtained by applying to the Parish Clerk.

Mill End Close/Waterside

Essential works are being carried out along the riverbank/island. Firstly, to clear the island of dead trees and fallen wood so the island can be widened to enable the Internal Drainage Board access and be able carry out overdue clearing of the river. The work being done to the side of the island adjacent to the pathway is to remove overgrowing shrubs, mainly brambles so that a fence can be installed to further protect the island area and ensure public safety.

Recreation Ground

- Lighting: The Parish Council are continuing to look at suitable designs/costs for fitting additional lighting along the footpaths in School Lane Recreation Ground.
- Seating: The Parish Council are looking into installing additional benches/picnic table in the recreation grounds.

Luton Airport Expansion

London Luton Airport's submission for expansion has been accepted for examination by the Planning Inspectorate (PINS), additional information can be found on the link: www://lutonrising.org.uk/dco-representation/

Eaton Bray Parish Council Accounts

A copy of the Parish Council's Finance & Annual Reports can be viewed on the Parish Council Website.

Monthly Payments, June 2023

A copy of the Parish Council monthly payments can be seen on the Parish Council website or obtained by applying to the Parish Clerk.

Parish Council Meeting (1st Floor, The Coffee Tavern, Eaton Bray)

Details can be obtained from the EBPC website, www.ebpc.co.uk

- No meeting in August.
- Parish Council Meeting, Monday 4th September 2023, from 7:30pm
- Parish Council Meeting, Monday 2nd October 2023, from 7:30pm

Parish Council Open Office (Ground floor)

10am-12noon at The Coffee Tavern, High Street, Eaton Bray

(Dates/times subject to change, please check the EBPC Website for updates)

- Tuesday 8th August 2023
- Tuesday 12th September 2023



Heidi Head, Parish Clerk

Email: clerk@ebpc.co.uk – Telephone/Text: 07931 479663 – Website: www.ebpc.co.uk

Parish Office: The Coffee Tavern, 18 High Street, Eaton Bray, Beds, LU6 2DP

Postal Address: 17 Hammond Street, Aston Clinton, Bucks, HP22 0AJ

Follow Eaton Bray on Facebook - Keep up to date with what is going on in your parish



Dunstable Probus Club

Dunstable PROBUS Club meets on the second Monday of the month at Tilsworth Golf Centre and membership is open to retired or semi-retired professional and business people. The Club's main purpose is the promotion of good fellowship. Members enjoy some social activities and the occasional organised visit throughout the year and after their regular monthly lunch meetings are entertained by speakers who give talks on a wide range of topics. If you are interested in joining the Club, please contact the Secretary, Philip Savage on 01582 662462.



Edlesborough Parish Council News

Including Edlesborough, Dagnall and Northall



Cllr Chris Nevard

EPC is sad to announce the resignation of Mr Chris Nevard from the Council. Chris had served on the Council for many years and will be greatly missed. EPC is sure parishioners will join them in thanking Chris for all his hard work and commitment to the role.

Parish Councillor Vacancy

Any parishioner interested in becoming a Parish Councillor should contact the Clerk for more information via clerk@edlesborough-pc.gov.uk

Allotments

The annual allotment rent for 2023/24 is due to be paid at the start of October 2023. The rent due is £2.10 per pole. EPC requests that payments are made by internet banking. Any tenants not able to pay by **internet banking** please contact the Clerk ASAP to discuss an alternative payment method. Please ensure rent is paid by 11th October 2023, late payments will incur a £10 administration fee.

EPC currently holds a waiting list for all allotment sites, anyone wishing to be added to the waiting list should contact the Clerk.



Improvements to the Children's Play Area on Edlesborough Green

At the time of writing this report the installation of the much-anticipated new play equipment on Edlesborough Green is expected to commence in August. All being well Council will organise an official opening ceremony in October.



New Noticeboards

EPC has purchased and installed two new noticeboards on the end of Edlesborough Pavilion, facing the tennis courts. One will contain information about ECSC CIO (Edlesborough Community Sports Club, Charitable Incorporated Organisation) and events in the Pavilion. The other information from the Parish Council and about Edlesborough Green.

Buckinghamshire Councillors

Copies of the latest reports from the Buckinghamshire Councillors can be viewed on the EPC website alongside the minutes of the EPC meetings.

Recycling on Edlesborough Green

Eagle eyed parishioners will have noticed that the blue recycling bin on Edlesborough Green has been relocated to near the tennis courts.

Unfortunately, despite the signs and labels the waste in this blue bin was often contaminated with waste that cannot be recycled. Contaminated items included a broken tennis racket, nappies and dog waste!

This contamination then resulted in Buckinghamshire Council imposing charges on EPC. Since the installation of the bin EPC has received a total of £53.06 in contaminated waste charges. Whilst this amount may not seem a high, it does then mean that the contaminated recycling cannot be recycled.

Please use this
BLUE BIN
for waste
that can be
recycled



The following items can
be put in the blue bin:

- Paper & Cardboard
- Empty Plastic Bottles
- Empty Cans
- Waxed Cartons

Please **do not** put any food or liquids into the bin as this will contaminate the waste and prevent it from being recycled.



Please use the **green** litter bins for rubbish that cannot be recycled.

Please **do not** put dog waste into either the green or blue litter bins.

Dog waste **must** be disposed of in the **red** dog waste bins.

If you find that any of the bins are full, please take a short walk to the next bin or take your litter home with you.

Let's all work together to keep our villages tidy and litter free!
Speedwatch & EDaN Traffic Management

Any parishioner interested in becoming involved with the EDaN Community Speedwatch for Edlesborough Parish should contact Cllr Alan Williams via email at alan.williams@edlesborough-pc.gov.uk or on 07828 398371.

Council Meetings

The next Edlesborough Parish Council Meetings will take place on:

- Thursday 21st September 2023 – in Edlesborough Pavilion
- Thursday 19th October 2023 – in Northall Village Hall

The meetings will commence at 7:30pm.

Parishioners are welcome to attend all Ordinary Parish Council meetings and may ask questions, raise issues, and give suggestions during the Open Forum before the formal start of the meeting. Council requests that where possible questions, issues and suggestions are submitted in writing to the Clerk by the Tuesday preceding the meeting. The agenda and full minutes of previous Parish Council meetings are available to view on the website or from the Parish Clerk.



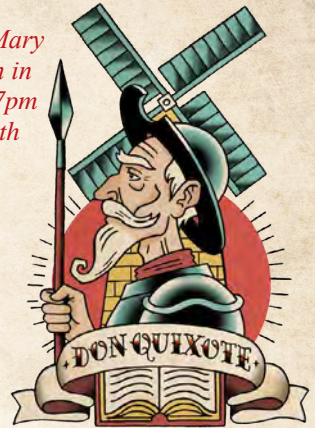
Clerk: Miss Penny Pataky Office hours Mon – Fri 10am – 2pm (Excl. Wed)

Email: clerk@edlesborough-pc.gov.uk 01525 229358 Website: www.edlesborough-pc.gov.uk

Facebook: www.facebook.com/EDANParishCouncil

Quill & Inkling

*Performing at St Mary
the Virgin Church in
Edlesborough at 7pm
on Wednesday 9th
August*



East Anglian Theatre Company To Perform in support of Historic Buildings

Venues across East Anglia will be visited by one of the most iconic figures from literary history in July and August, as **Don Quixote** rides in (with his squire Sancho Panza!) to right wrongs and defend the helpless.

We could not have asked for a better touring group

The epic story, penned by Miguel de Cervantes, is thought to have invented the modern novel and in doing so, created one of the most iconic characters of all time, with the word 'Quixotic' and the phrase 'Tilting at windmills' entering the English language as a direct result.

Quixote, a middle aged man who decides the world is so awful he will ride out like a mediaeval knight seeking adventures, has captured the imaginations of generations and has been reinvented numerous times. This year, the production team have utilised puppetry and clowning to portray the Don in this new family friendly version.

If you get a chance to go see it, do so



As he sallies forth in search of adventure, he will have an extra chance to do good as each ticket sold will contribute to the upkeep and wellbeing of the venue. Quill and Inkling share the profit of ticket sales with their venues, and this year are heading to many places in need of support, such as Dereham Windmill, and several properties looked after by the Churches Conservation Trust (CCT).

Left: Don Quixote (puppeteered by Joshua Gould) and Sancho Panza (A.J. Deane) discuss tactics in front of Dereham Windmill, the location of the final performance.

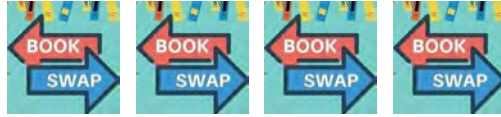
Below: Georgie Matthews as the fiercely independent shepherdess Marcela and Kiara Hawker, as the priest determined to bring Quixote to his senses.
Photography by Al Pulford

The play is the brainchild of **Ivan Wilkinson and Beth Moreno Rivera of Quill & Inkling Theatre Company**, based in Norwich, who explore classic stories and present them in dynamic theatrical ways.

An awesome performance, absolutely loved it



To book: www.quillandinkling.com



Take a book you want to read - Leave a book you want to share

**The next Book Swap is at St Mary's Church
on Saturday August 5th and Saturday September 2nd
from 10.30 – 12. 00 am**

The Book Swap continues to have a steady stream of customers to our library, newcomers and many regulars; we look forward to seeing you all. If you like reading, please bring a book to swap and come and join us.

This month we will be reviewing all the books in our library; adding some and removing some. If you have any suggestions of books you are interested in please let us know.

If you need help accessing the digital library, contact us and we will try to assist you.

For more information about Book Swap please contact:

Chris Sanders Email: chris.sanders45@gmail.com

Jenifer MacKenzie Email: jenimackenzie@hotmail.com

The Book Swap is free and open to all adults

Friend of Bucks



**Age Concern
NORTHALL & DISTRICT
WEDNESDAY CLUB**



Charity No. 293080

**We are looking for volunteer
drivers and conductors to help with
transporting the members to and from
their homes on our minibus. This would
be on a rota system, depending on the
number of volunteers.**

Call 07854 230243 if you can help.

THE FOCUS ON FILM SOCIETY

This will be our 17th year of showing films in Eaton Bray Village Hall. We meet on the second Monday of each month from September to June. We start at 2pm (Doors open at 1.30pm) and after the film we serve tea and biscuits and an opportunity to chat about the film.

The films are chosen by the members who submit suggestions during the season, these are then reviewed by the film selection committee and ten are chosen for the coming season.

Membership for a season of ten films costs £25 with a sliding scale for people who join part way through the season. Great value at £2.50 per film!

Films for this season will include:

- | | |
|--------------------|---------------------------------------|
| Ticket to Paradise | Elvis |
| The lost King | Matilda the Musical |
| Living | All is True |
| Allelujha | See how they Run |
| A man called Otto | The unlikely pilgrimage of Harold Fry |

New members are always welcome, so if you are interested do come along and give us a try.

For new members guest membership is available at £5 for one film before joining. Remember our first film will be shown on Monday 11th September.

For more information call Graham Chappell on 07980 321977 or come along to one of our films.

Appledown Rescue Dog of the Month



Lovely Lina Lamont is a lurcher who was born in March 2022, so she is still a youngster. Lina is a slim, leggy girl who walks well on the lead and seems calm and confident. Contrary to what people often think, lurchers don't need masses of exercise and love to curl up on a sofa! Because she needs on-lead walks, Lina would love a secure garden for zoomies! She would probably live with a male dog pending introductions, but not cats. Children 7 years upwards.

If you are interested in offering a rescue dog a loving home please download an application form from our website where you will find information on the rehoming process. To support our work it's easy to make a one-off donation of £3 simply by texting APPLE to 70111, or donate via Paypal using the 'DONATE Support a Cause' option. Cheques are also welcome.

Appledown Rescue & Rehoming Kennels Harling Road, Eaton Bray LU6 1QY

01525 220383 (10am-1pm & 2-4 pm) E-mail: appledown.kennels@btinternet.com

Website: www.appledownrescue.co.uk **Viewings are by appointment only.**

Registered Charity Number 1116848





Stephen D. Janes

(Established in 1982)

**CARPENTRY, JOINERY
KITCHENS FITTED
PROPERTY MAINTENANCE
TELEPHONE: 01525 220649**



JAMES FALCON-CROSS

LANDSCAPING AND OUTDOOR LIVING DESIGN

**ALL ASPECTS OF LANDSCAPING
UNDERTAKEN INCLUDING
FENCING, TURFING AND PATIOS
TIMBER STRUCTURES
DESIGNED AND BUILT**

VEGETABLE AND HERB GARDENS

01442 843258 / 07769 901325

ONECROSSFALCON@GMAIL.COM

EDLESBOROUGH SURGERY

11 Cow Lane Edlesborough

**All Enquiries/Appointments
01525 221630**

www.edlesboroughsurgery.co.uk

**Friendly village Practice
offering a wide range of
health services including coils/
implants, minor surgery, travel
advice, in-house blood tests at
surgery, on-line appointments
and repeat prescription
ordering.**



BCA Chef of The Year



**Curry Life
Chef of the year**



**Spice Time Best Located
Restaurant in Est of England**



**Café
masala**
Exquisite Indian Cuisine

Fully Licensed & Air Conditioned

OPEN SEVEN DAYS A WEEK: 5:30 - 11:00

CLICK AND COLLECT 10% DISCOUNT OVER £22

Tel: 01525 222264

Address: 63 Bower Ln. Eaton Bray, Dunstable LU6 1RB

Website: www.cafemasala.com



**Regional in Finalist
Est of England**

ASPECT

YOUR LOCAL ELECTRICIAN
OVER 20 YEARS EXPERIENCE

ELECTRICAL

CONSUMER UNIT UPGRADES (FUSE BOARDS)
LIGHTING - INTERIOR, EXTERIOR & SECURITY
HD CCTV
REWIRING
NEW INSTALLATIONS
TESTING & INSPECTION

ALL WORKS TO CURRENT WIRING & BUILDING REGULATIONS
PART P CERTIFICATED & FULLY INSURED

CALL STEVE ON
07976 283969
aspect@sparky.me



Misty Double Glazing?

Over 30
Years
experience.
FREE
Quotes

Over 30
Years
experience.
FREE
Quotes

**KEEP YOUR WINDOW FRAMES...
... WE JUST REPLACE THE GLASS!**

• UPVC • Aluminium • Or Wood

Because we replace just the glass the repair is a
Fraction of the cost of a complete replacement window.

BEFORE



AFTER



mistydoubleglazing.co.uk
QUALITY GLAZING SERVICES

01525 876808

WE ALSO REPLACE BROKEN...

• Glass • Handles • Hinges & Locks
AND REPAIR...Patio Doors & Conservatories!

G & J Groundwork & Landscapes

Block Paving * Patios * Driveways
Clearance * Paths * Shingle * Slabs
Artificial Grass * Fencing
Free estimates

Garry

07949 118011

Spinney Landscapes
& Gardening Services

All Aspects of Grounds Maintenance
Leaf Clearance • Grass Cutting/Scarifying
Patios & Driveways • Pressure Washing
Weed Control • Tree Work & Wood Chipping
Fencing • Snow Clearing • Mini Digger Hire
Tel: 01525 839622 Mob: 07876 500292
Email: spinneylandscapes@gmail.com
www.spinneylandscapes.com



www.mjsecurity.co.uk



- Latest App Control:
 - Intruder Alarms
 - CCTV
 - Solar Cameras
 - Security Light Cameras
- Door Entry Systems
- Ring, Hik, Smart Doorbells
- Access Control Solutions
- Takeovers/Upgrades of Existing Systems
- 24 hour Engineer Support Service Contracts
- 24 hour Central Station Monitoring Option
- Insurance Company Approved

**Call us on
01582 665022
for a free quotation**



A PLACE TO



PERFORM

**Unlock
your child's
potential**

**ASK
ABOUT OUR
TWO WEEK
TRIAL**

Stagecoach Leighton Buzzard, Wing & Tring

Singing, dancing and acting classes for 4 - 18 year-olds

-  www.stagecoach.co.uk/leightonbuzzard
-  01525 877981 / 07903 925900
-  Gilbert Inglefield Academy, LU7 3FU
The Cottesloe School, LU7 0NY
Bishop Wood CofE Junior School, HP23 5AU

 TRAFALGAR ENTERTAINMENT | COMPANY

Stagecoach Performing Arts is the trading name of Stagecoach Theatre Arts Limited. Stagecoach Theatre Arts schools are operated under franchise and are independently owned by their Principals. Stagecoach and Creative Courage For Life are registered trademarks of Stagecoach Theatre Arts Limited.



Creative Courage
For Life®

JoAnn Latus School of Dance



- Ballet, Tap and Modern classes for children aged 3 and upwards
- Adult Ballet classes starting in the New Year
- Professionally trained teachers and safeguarding policies in place
- Regular exams, shows and theatre trips

Classes held in Buckinghamshire, including Eaton Bray on Tuesday and Friday evenings

For more information contact JoAnn Latus:
Tel: 07800 518654

Email: info@jolatusdance.co.uk

Web: www.jolatusdance.co.uk
[@jolatusdance](http://jolatusdance)



Moren Associates
Publishing Services

Desktop Publishing

Presentations
Books, Leaflets Brochures
Magazines, Adverts
Design & Layout
Self Publishing

Digitising
Scanning of Photos &
Documents, Slides & Videos
Archiving, Photo Repairs
Domain Name, Email
Address &
Web Site Hosting

01525 229695
enquiries@morenassociates.co.uk
www.morenassociates.co.uk

Absolutely Plastered

DOMESTIC/COMMERCIAL,
CLEAN AND RELIABLE SERVICE,
FREE ESTIMATES, FRIENDLY ADVICE



- * Plastering & Coving
- * Floor Screeding
- * Pebbledashing & Rendering
- * Dry Lining
- * Cornices & Mouldings
- * Insurance Work Undertaken

CALL NICK CONWAY ON

Mobile: 07751 830716

17 Kirkstone Drive, Dunstable LU6 3PP

ARC Contract Services Ltd

- Painting & Decorating ● Plastering
- Wall & Floor Tiling ● Door Hanging
- Bathroom & Kitchen Installations

20 years experience

All work guaranteed and fully insured

Call Adrian: **01582 539179**

Mobile: **07789730580**

email: adriancalder107@live.co.uk

CHARLES HILL

GARDEN SERVICES LTD

DESIGN | BUILD | MAINTAIN

LANDSCAPE CONTRACTORS
NCH Horticulture City & Guilds Garden Design

A professional company working with all your garden requirements from design to complete landscape.

07773 723236

www.charleshillgardenservices.co.uk

www.alleyarroundbbq.co.uk

Leighton Aerials

Established 1970

For all your aerial
and satellite needs
call Colin on

01525 374742



NG AUTOS



MAKING YOU AND YOUR CAR HAPPY

CAM BELTS • MOT'S • MOT REPAIRS • HEAD GASKETS
AIR CONDITIONING • RECOVERY/BREAKDOWN
DIAGNOSTICS SERVICING • BRAKES • SUSPENSION
CLUTCHES • GEARBOXES • TYRES • WHEEL BALANCING
WHEEL ALIGNMENT COLLECTION & DELIVERY

CALL NICK OR GARY

01525 220850 OR 07972 198615

**SPARROW HALL FARM, LEIGHTON ROAD,
EDLESBOROUGH LU6 2ES**



TODDINGTON

INDEPENDENT FINANCIAL ADVICE



DO YOU NEED FINANCIAL ADVICE?

We can help you to review your current or proposed,

**Mortgages, Insurances, Pensions & Investments, Equity Release, Inheritance Tax,
Wills and Trusts, or a general review of your current position?**

'As a mortgage is secured against your home, it may be repossessed if you do not keep up the mortgage repayments. The financial conduct authority does not regulate tax and estate planning or will planning'

**Unlike some TV adverts we don't charge a fee for equity release, so no broker fees
added to your loan!** 'Equity released from your home will be secured against it'

LOCAL OFFICE: Toddington

Contact: Philip Hadlow

Tel/Fax: 01525 874100

Mobile 07768 277 532

info@toddingtonifa.co.uk

www.toddingtonifa.co.uk

**Free Will with Investments & Pensions placed through
us of over £50,000 and within 6 months of investment
Talk to us for a free initial consultation**

Toddington Independent Financial Advice Ltd is authorised and regulated
by the Financial Conduct Authority.

Registered office: The Stables, Griffin Farm, Conger Lane, Toddington,
Bedfordshire, LU5 6BT

Registration Number: 760687 Company Number: 9931606



TIME TO MOVE?

**Don't be alarmed,
we're here to help!**

Established in 1999

e: info@plummproperty.co.uk

Five Good Reasons to use **Plumm Property**

Pprivate Offices - direct savings to you on fees

Local Knowledge - from our highly experienced team

Unrestrictive contracts - no lengthy tie-in periods

Marketing to outside area - attracting London buyers

Managing all your needs with a 1st class professional service

From Offer through to Completion of Sale



01296 660230

www.plummproperty.co.uk



The Gentleman Gardener

Let your local RHS qualified gardener make your garden beautiful, from simple garden maintenance to total redesign of your garden.

Please call Barry on
01525-222451 or
07541196384

to pop round for a free chat.



**A McClelland
Pest Control**
FOR FAST RESPONSE CALL:
Mobile 0777 494 8415
Office 01582 872158

*specialists in: wasps - bees - ants
hornets - fleas - cockroaches - bed
bugs - pigeons - magpies - rabbits
rats - mice - moles - squirrels
foxes - mink - feral cats*



UNMARKED VEHICLES

For further information please call or email
amcclellandpestcontrol33@gmail.com



All Aspects of Pressure Washing

- Roofs cleaned and coated
- Block Paving Refurbished
- Driveways/Patios/Pathway Cleaning
- Building Fascia/Cladding Cleaning
- Gutter Vacuuming
- Fascias & Soffit Cleaning
- Graffiti/Chewing gum removal
- Conservatory Cleaning

0800 298 5883

www.greatoutdoorscleaning.co.uk



MEMBER OF THE FEDERATION OF SMALL BUSINESSES



**FREE INITIAL
CONSULTATION**

**ALL ACCOUNTING,
PAYROLL AND TAXATION
SERVICES COVERED**

Specialising in New Business Start-Ups

- Fixed Fee Quotes
- Unlimited Email and Telephone Support
- Back Office Solution

(dealing with your back office accounts function
enabling you to focus on the rest of your business)

Please contact us for more information...

1st Floor • 11 High Street • Tring • Hertfordshire • HP23 5AL

Call us on... 01525 229 539

contact@riley.accountants • riley-accounting-solutions.business.site

[@RileyAccounts](https://www.facebook.com/RileyAccounts) • Also on [f](https://www.linkedin.com/company/RileyAccounts) [in](https://www.linkedin.com/company/RileyAccounts)

YOUR LOCAL ACCOUNTANT



EDLESBOROUGH TENNIS CLUB

Come and play tennis with us at our friendly club on The Green

- High quality floodlight courts with easy booking system
- Coaching available for adults and children from our LTA coach
- Weekly club nights, with balls and floodlights provided

Contact us at: enquiries@etctennis.org or visit us at: www.etctennis.org

Aug/Sep at the Grove



Popular Music

Ireland The Show - 18 Aug
Totally Tina 2023 - 8 Sep
The Wonder of Stevie - 12 Sep
That'll Be The Day 2023 - 14 Sep
The History of Rock - 15 Sep
1999 The Ultimate Prince Experience - 17 Sep
Stars From The Commitments - 20 Sep
The Drifters - 24 Sep
Philomena Begley in concert with special guests
Shawn Cuddy and Stephen Smyth - 26 Sep
Back to Bacharach - 27 Sep

Variety

Harry Redknapp Returns - 7 Sep
Paul Young: Behind the Lens Tour - 16 Sep

Comedy

Carl Hutchinson: Watch Till The End - 9 Sep
Simon Brodtkin: Screwed Up - 22 Sep
Barnstormers Comedy Club 2023 - 28 Sep

Children's Shows

Andy & The Odd Socks: The Dial it Up to 11 Tour - 23 Sep

Encore Screening

Oklahoma! Starring Hugh Jackman - 5 - 7 Aug
Das Rheingold: The Royal Opera - 25 Sep

Film

Elemental - 2, 10 & 17 Aug
The Little Mermaid - 23 Aug
The Unlikely Pilgrimage of Harold Fry - 2 & 12 Aug
Chevalier - 3 Aug
No Hard Feelings - 10 Aug
Ruby Gillman: Teenage Kraken - 9, 12 & 26 Aug
Are You There God? It's Me, Margaret - 12, 19 & 24 Aug
My Fairy Troublemaker - 16 Aug
Hypnotic - 16 Aug
Big George Forman - 17 Aug
Greatest Days - 3, 9 & 19 Aug
Asteriod City - 23 & 25 Aug
Indiana Jones & The Dial of Destiny (Cert 12A) - 24 - 26 Aug
Barbie - 26 & 30 Aug - 1 & 2 Sep
Mission Impossible: Dead Reckoning Part 1 - 30-31 Aug - 28-29 Sep
Teenage Mutant Ninja Turtles: Mutant Mayhem - 31 Aug & 2 Sep
Oppenheimer - 6 Sep
The Meg 2: The Trench - 21 Sep

Ticket prices vary; for more information or to book, call the Box Office on 01582 60 20 80 or visit the website at www.grovetheatre.co.uk.



Rocking the Church at EdleFest 2023

2023
EdleFest

If you were up at the Church on the Hill at EdleFest this year you will know that we had another great two evenings of live music here in the village. If you weren't – then don't miss next year's festival. Look out for the Earlybird tickets going on sale, hopefully before Christmas!

The event entertained around 300 people with six acts, a well-stocked bar and even a slice of cake or two. It also raised welcome funds for restoration/reinstallation of the Tower stained glass window.

Friday night headliners **Rusty Shackle**, one of Wales' finest indie bands, had the whole place rocking and the award-winning songwriter **Blair Dunlop** illustrated his fine songwriting with his band on Saturday. We also enjoyed supporting acts including stunning female vocal harmonies from **Roswell**, some rip-roaring tunes from sibling folk duo **Painted Sky**, the enchanting voice of **Ellie Gowers** and our resident band **The Dicemen**.



Rusty Shackle Edlefest 2023

This wonderful village event can only take place with the contributions of the small group of 'Friends' and their helpers; that hill gets steeper each year, made a little easier with Malcolm Weaver and his Gator! Plus of course, the audience. So, many thanks to all of you who attended and special thanks to those on the right for their contributions:

You can find out more about next year's event as details become available by searching:-

- **online for EdleFest**
- **Facebook page 'Friends of the Church on the Hill'**
- **W: edlefest.site123.me**
- **M: 07974 921923**
- **E: EdleFest@gmail.com**

**See you next year @
EdleFest 2024!**

EdleFest 2023

Brought to you by Friends of the Church on the Hill, Edlesborough

Supporters, Sponsors, Thank you's & Donations

Eaton Bray Academy	- Loan of the Staging
Edlesborough Parish Council	
Fine & Country	- Event Advert Boards
Focus Magazine	- EdleFest Coverage
'Friends' (FoTCoTH)	- Raffle Prizes
Oakman Inns & Restaurants	- Raffle Prize
Friends & Family of 'Friends'	- Other Help & Support
Janes Ltd Flooring	- Local Ticket Agency
Richard Brandon	- EdleFest Website
Richard & Mick	- Event Sound & Lighting
The Dicemen	- Their Support
The Pratt Family	- Temporary Car Park
	Sparrow Hall Farm
The Stilliard Family	- Car Park Marshalling



EDLESBOROUGH PARISH COUNCIL

EPC Small Grant Scheme

Is your organisation looking for money for a specific project?

Have you heard of the EPC Small Grant scheme?

The EPC Small Grant is a great opportunity for local groups, local charities, and local organisations to get a grant of up to £500.

The main terms of the grant are very straightforward.

- The purpose for which the grant is made must be in the interest of Edlesborough Parish that covers the residents of Edlesborough. Dagnall and Northall.
- EPC will determine the size of the award up to a maximum of £500.
- EPC will not award funds for activities that have already taken place.
- Any publicity covering the activity funded must mention EPC's involvement.
- Following the award, recipients must make a short presentation at the Annual Parish Meeting.



Applications will be reviewed at any time during the year and awards to successful applications made in each quarter beginning in April of each year. The total funding available is limited.

Full details of the terms of the scheme can be found here on the EPC website www.edlesborough-pc.gov.uk/community-information/epc-small-grant-scheme/

B Discover Bucks
Museum 
& Roald Dahl Children's Gallery



MECHANICS ALIVE!

A humorous, hands-on exhibition
combining art, science and engineering
to delight visitors of all ages!



22 JULY - 2 SEPTEMBER 2023

Discover Bucks Museum, Aylesbury HP20 2QP
For opening times and ticket prices visit:
discoverbucksmuseum.org



**CABARET
MECHANICAL
THEATRE**



ARTS COUNCIL
ENGLAND



Mechanics Alive! Produced and toured by Cabaret Mechanical Theatre and Science Projects



Next EB Village Hall Quiz 14th October

Quizzers and scribblers, when you read this in this wonderful focus Magazine it's just a few weeks to go for the last Quiz for 2023

So please contact me for reserving your table. Please a max of 8 players per table. Prizes for winning teams. Please arrive for 7pm with quiz starting at 7.30pm. We will be running our raffle again. Cost £10 per person and includes a Plowman's platter

Once again we will be supporting local Charities with help from you and your Team members

You know we love a Theme, last year's Xmas Jumpers! So being close to Halloween here is a starter for 10 on this theme - enjoy, answers on page 40

1. Which science fiction horror series from Netflix is set in the fictional town of Hawkins?
2. Mädchen Amick plays Shelly Briggs in David Lynch's cult TV classic Twin Peaks - but which eerie Netflix drama does she star in currently?
3. In the Friends episode 'The One with the Halloween Party', what memorable - but not particularly spooky - costumes did Ross and Chandler wear?
4. On 31 October back in 1992, the BBC petrified the nation with Ghostwatch, a scripted drama that duped viewers into believing it was a live transmission from a haunted house. Which trusted TV veteran presented it?
5. Ryan Murphy's unsettling Netflix series Ratched starring Sarah Paulson is inspired by which classic 1962 novel?
6. Netflix's slasher horror series Fear Street Trilogy are based on the novels by which young adult author?
7. Who played Morticia in the the new Netflix series "Wednesday", in Tim Burtons revisited version?
8. Bates Motel starring Freddie Highmore is the prequel to which classic horror film?
9. What is the name of the young woman who vanishes in David Lynch's cult series Twin Peaks
10. What is the surname of Sabrina the teenage witch?

Contact by email to book your table @ Mintyman1958@gmail.com

Look forward to seeing you all real soon, Robert Taylor





The summer months have been busy for Eaton Bray Good Neighbours. We helped 43 residents who requested help. Of these, 9 we helped for the first time. We gave 70 lifts to doctors and hospitals and helped 11 villagers with the collection of their shopping. During the last three months our volunteers have made 44

prescription deliveries. The team of befrienders made 98 calls altogether to various friends in the village.

Volunteers to help with Eaton Bray Good Neighbours scheme are always welcome. We welcome any help you can offer. We provide lifts to doctors or hospitals. We also collect and deliver medication and shopping.

Some of our volunteers continue to be in touch with befrienders in the village. A telephone call to someone who lives on their own is often welcome for a friendly chat. If you would like to volunteer to befriend someone by phone in the village, please contact Good Neighbours.

You can contact us by calling 07930 987064 when a friend will answer your call. We are here if you need any help.

✉ Eaton Bray Good Neighbours



Quiz Answers - see page 39

1. Stranger Things
2. Riverdale
3. Ross was Spud-nik and Chandler was a pink bunny
4. Michael Parkinson
5. One Flew over the Cuckoo's Nest
6. R.L.Stine
7. Catherine Zeta Jones
8. Psycho
9. Laura Palmer
10. Spellman

YOUR NEIGHBOURHOOD POLICING TEAM
Wing and Ivinghoe

			
Inspector James Davies	Sergeant David Kuttner	Police Constable Dionne Edwards	Police Constable Jake Bye
			
PCSO Tina Hobson	PCSO Connor Smith	PCSO Megan Dean	

The neighbourhood policing team work with our local communities to make Aylesbury Vale safer

To contact your local Team call **101** or email them on greatbrickhillwingivinghoeNHPT@thamesvalley.police.uk

You can also report an incident on our website: www.thamesvalley.police.uk

In an emergency always call **999**

Visit us on Facebook at www.facebook.com/TVPAylesburyVale



“We Still Have a Bit of a Problem”

Some of us more mature members of the Villages’ community have been chatting amongst ourselves as we do. One of the things which several of us noticed at this year’s Carnival was the fact that many of the helpers on the stalls were the same faces who had been there for many years. The concern was that the “younger generation”, while enjoying the Carnival and supporting their efforts, were not getting involved with helping to run it.

In 2017 I wrote an article for “Focus” entitled “We Have a Problem” in which I mentioned that it would appear that most of the clubs and organisations around the Villages were badly in need of an injection of younger help as the leaders and organisers were all getting older. Well. I am glad to say that things have improved quite a bit since then. The Pavilion would not be functioning without the numerous volunteer helpers behind the bar, we have younger members on the Parish Council (but there are still vacancies), and the youth organisations in the villages do seem to be flourishing.

But we can’t get complacent. There are still areas where help is needed. The Beautification Team who plant and tend the planters around Edlesborough, Northall and Dagnall are getting very short handed. Help is badly needed with tidying and watering during the summer and planting up in Spring and Autumn. Any gardeners out there with a little time and energy to spare?? In Eaton Bray, kind folk adopt a planter and look after it, I believe.

We have a small but enthusiastic team of litter pickers who help to keep the villages clean and tidy. Unfortunately, it’s a never-ending job, but very satisfying and almost addictive once you get going – “just a bit further”. Fancy joining the Team? There are a few organised litter picks but actually most is done on spec by amazing folk who see a mess and go out and deal with it.

There is a move to get the Edlesborough Speedwatch Team operating again because we still have a problem with speed through the villages in spite of the new MVAS units. There are enthusiastic groups using Sentinel in Ivinghoe – why not in Edlesborough, Northall and Dagnall? But it needs bodies!!

Age Concern Wednesday Club are looking for volunteer drivers and conductors to help with transporting members to and from their homes on the minibus. Not ALL the time – on a rota basis, so the more help they are offered, the better.

All this on a quick trawl through July “Focus”.

So why not think about it? Can you spare time to help in some way? Are you newly retired and maybe looking for something interesting to do in between the holidays? (!) Are you new to the villages? It’s a great way to meet people! Whilst I appreciate that people work long hours and are tired and busy at weekends with families, they are the very people who enjoy living in a village community with organisations, village halls for parties and youth activities, and a tidy, pleasant village environment. But it doesn’t happen on its own and unless help is forthcoming much of this will cease as we “More Mature” fall by the wayside. Maybe changes are needed in the way things are done. The main thing is that volunteering is satisfying and rewarding when you know that you are helping to improve things in your community. It’s no good moaning that things are going to pot, and “they” should be doing something about it. **YOU** are “they”.

If you fancy becoming a member of one of the groups who make our villages the pleasant places they are, don’t hesitate. Either use the contact details in “Focus”, or the Parish Clerks, or contact me and I will put you in touch.

✉ Lorna Cabbage. lornamcabbage@gmail.com

TOTTERNHOE VILLAGE SHOW



St Giles Village Hall, Totternhoe
Organised by Totternhoe Garden Club

Saturday 19th August 2023

Entrance from 2.15 pm

Admission £2, Accompanied children free



The 77th Annual Totternhoe Village Show is a traditional produce show, one of the few remaining in the area, with displays of vegetables, fruit, paintings, photographs, art work, crafts, cakes, scones, and jams.

The items are judged in the morning and doors are open at 2.15 for visitors to come and enjoy a cup of tea or coffee and cake, while looking round the show.

Items will be on sale from 3.45 pm



Friend of Bucks



NORTHALL & DISTRICT

AGE CONCERN

A GREAT LOCAL CAUSE

AGE
Concern



Enjoy our

HARVEST FESTIVAL AUCTION

WITH PROFESSIONAL AUCTIONEER

AT

THE SWAN NORTHALL

FRIDAY 6th OCTOBER

ENTRANCE FREE

Viewings from 7:30pm



Followed at 8pm by THE HARVEST AUCTION

Fundraising for

**MACMILLAN
CANCER SUPPORT**

WORLD'S BIGGEST COFFEE MORNING

COFFEE, CAKES AND MORE

FRIDAY 29th

SEPTEMBER

HOSTED BY ST MARY'S CHURCH,

EATON BRAY

10.00 TILL MIDDAY

EVERYONE WELCOME. PLEASE COME AND HELP THE CHARITY TO PROVIDE MEDICAL, FINANCIAL AND EMOTIONAL SUPPORT TO PEOPLE WITH A CANCER DIAGNOSIS AND THEIR FAMILIES IN THESE CHALLENGING TIMES.

Carnival Best Dressed Houses

A VERY BIG THANK YOU TO EVERYONE, on the Carnival Procession route, who decorated their houses this year. They made a really colourful sight with all the bunting and flags. To qualify for the cup or a gold, silver or bronze medal, the houses had to be decorated in the theme of "Childrens Films". The Judges were delighted that so many villagers responded to the challenge and the judges had some difficult decisions to make on Saturday morning. It was a joy to meet the entrants and present the cups and medals as follows:

Edlesborough

Cup and Gold Medal

Rose Cottage

Gold Medals

76 Moor End, 80 Moor End, 1 St Marys Glebe

Silver Medal

36 High Street, 3 Pebblemoor, 19/21 Brook Street

Bronze Medals

14 Pebblemoor, 1 Eatongate Close

Eaton Bray

Cup and Gold Medal

27 Moor End and The Vicarage

Gold Medals

130 High Street, 114 High Street, 9 High Street

12 High Street, 23 Moor End, 30 Moor End

Silver Medals

21 Moor End, 3 Corners House, 2 Orchard Way

100a High Street, 81 High Street, 81a High Street

92 High Street, 96a High Street

Bronze Medals

50 Moor End, 99 High Street, 86 High Street

Best Dressed Business

Cup and Gold Medal

Janes

Gold Medal

Edlesborough Flower Shop

Silver Medal

Fine & Country

Bronze Medal

Nisa

Many thanks to Candy and Trish for their help and support with the judging. Not an easy task this year!! I am sure we would all like to say a big thank you to Mark, all the Carnival Committee and the many volunteers for all the work they put in during the year. It is an enormous undertaking to organise such a large event and it was a wonderful day.

✉Margaret Jones



Paddington shared the Eaton Bray cup with Shrek





Your Photos

More carnival best dressed house winners

*Black Squirrel
by Beryl Bishop*

*Poppies
by Jackie Dormer*



Well the Carnival was another great day wasn't it? So many prizes to be won on the Tombola, Jigsaw Puzzles and books to peruse. We hope you all struck it lucky with tickets, prizes and something to amuse. We are pleased to record a fundraising total to date of £585! Thank you to all who donated, and of course all those who sorted, labelled, transported, set up and manned the stall - we all really appreciate your time and support.

Wednesday 19th July was our Afternoon Coffee Morning - a brief STOP PRESS note for this was in last month's article and a report shall be included in the next Focus. Our last meeting of the Summer was Wednesday 26th July - August is a month of rest for staff and a chance to regroup for the committee.

Club AGM is open to all and is held on the 2nd August at Northall Village Hall at 2pm. We return to Club on the first Wednesday in September - this year it's the 6th.

We now have a growing network of local crafters willing to "Share Their Wares" with us in our new offering - slots to sell, demonstrate and share your crafts for a couple of hours within our sessions. Please message with contact details if interested on joining our list.

Please don't forget to save the popular Harvest Auction date of 6th October.

On the back of a successful Music Quiz the Team have proposed a date in the Autumn - so please watch this space... wishing you all a great Summer.

We are always pleased to welcome enquiries for:

- Regular Rota Volunteers: Help in the Kitchen, Mini-Bus Drivers/Conductors
- One Off Volunteer Offers: to entertain, musical talent sharing ...
- Donations: items for fundraising & the sales table

For joining us as a Member:

Phone 07854 230243 - please leave a message & contact details - our leader Dee shall get back to you ASAP

We're also on Facebook: <https://www.facebook.com/WednesdayClubNorthall/> for following and any last minute updates e.g. any errors I may make in dates published here in Focus.

NORTHALL BAPTIST CHAPEL

Chapel Lane, Northall

(just beyond the 30 speed limit signs on the road towards Leighton Buzzard)

Everyone is welcome to our Sunday worship each week between 11am and 12.30pm including tea/coffee and time to talk together.

For more information contact:

John Hazell 01525 218142

Email northallchapel@btinternet.com

Web: www.northallbaptistchurch.org

There has been a Baptist Chapel in Northall for more than 200 years. Today we continue to seek to worship God, serve him in our daily lives and support and encourage one another in the difficult and the joyful times.

Nigel's Thoughts



Dear Friends,

Whilst on holiday on the Isle of Wight at the beginning of July, I discovered once again the beauty of God as seen in his creation.

Admittedly, the weather was wonderful, but there also seemed a more peaceful rhythm. Calm, stability and balance, for a while permeated the whole land (and sea) scape, and I was filled with a great sense of peace.

Many of you will know that, by nature, I am a worrier. I am therefore, constantly having to remind myself that anxiety and concern about the things that trouble you and me achieve nothing. They only reduce our quality of life and the health of our relationships with those around us.

Writing his letter in the bible James says, "Every perfect gift is from above, coming down from the Father of lights, with whom there is no variation or shadow due to change" (James 1 verse 17).

The favourite hymn of many individuals is Tomas Chisholm's "Great is thy faithfulness, O God my Father", with its second line, which picks up what James is meaning "there is no shadow of turning with thee".

The familiar second verse affirms that
"Summer and winter and springtime and harvest,
sun moon and stars in their courses above,
join with all nature in manifold witness
to thy great faithfulness, mercy and love".

My prayer for you in these coming months is that you will discover the perfect gift of peace, that passes understanding, and that comes from dwelling in the faithful love of God.

God bless, ✍️Nigel



Edlesborough W.I.

This month was our Members Evening. That is when one of our members volunteers to do some kind of entertainment for the evening which covers a big range of things we can do. This year Elizabeth Braiden organised a flower arranging evening which was such fun. You did not have to be a budding Constance Spry it was a case of 'have a go' and I think some ladies found talents they didn't know they had!! We all took a cup or glass and we were provided with a lovely bunch of dainty and colourful flowers and foliage to arrange in anyway we liked. Sitting on tables of 6 people it gave us a chance to chat with our friends whilst we were creating our arrangements. At the end of the evening we all looked at the different styles and creations, approx 40, and it was amazing how different and pretty they all looked. It was a really fun informal evening ending with our usual raffle and refreshments.

We are also looking forward to a pub lunch at the Swan in Northall before our next meeting and a lot of our members enjoyed a day trip to Southend. We all enjoy a very varied timetable of events that our hard working committee arrange for us.

New members are always made welcome, please come and join us on the second Tuesday of the month in Edlesborough Village Hall.

✍️Jane Jones

LET'S MOVE IT!

By Moira D'arcy, Chartered Physiotherapist and Rehab Pilates Teacher

By being more active across the day, you will feel better, burn more calories and appreciate the outdoors. There is now research to suggest that proteins are released when you exercise that affect the brain making you feel more positive as well. Make moving more part of your daily routine with some of Moira's tips.



- Clean your way to fitness – cleaning around the house will have you moving and breaking a sweat and don't pay someone to wash and clean your car, do it yourself save money and burn extra calories along the way.
- Don't be a couch potato – if you love nothing more than sitting on the sofa and watching a box set after a day at work sat at a desk, why not do the ironing, tidy the room or clean out that cupboard that you have been meaning to do for ages.
- Catch up with friends – instead of a boozy lunch, head to the park, beach or countryside for a walk
- Get down with the kids – simply throwing a ball around in the garden or a game of hide and seek can get everyone up and moving. Why not put on some dance party music or an

interactive dance game after dinner.

- Park further away – if you have to drive to work or the shops, park at the back of the car park so you need to walk further.
- Go barking mad – when you're a dog owner walks become a part of life and are great for your physical and mental health too.
- Get off your chair – alternate between standing and sitting or get a standing desk.

If you have a muscular or bone problem holding you back from doing the things you love, why not consider joining a Pilates group? Moira's Therapeutic Pilates is designed with the individual in mind, teaching you how to improve your posture, strengthen your core and target those specific injuries/niggles you have. For more information, email Moira on moira@stjudesclinic.com

Edlesborough Baptist Church

All are welcome to our 11am service every Sunday

Keep up to date by visiting:

www.edlesboroughbaptist.wix.com/home

Find us on Facebook @gbce2014



Northall Baptist Church

200 years and still going

A little Church with strong local links

Health and Happiness

As I am writing this there is a lot of praise and some criticism of the NHS, reaching it's 75 years. It may not be quite what it was in some respects but think of the huge advances in medical treatment. Back in 1948 what was the treatment for cancer, sepsis etc?

My husband was born just before the NHS came into action. It has always been a source of complaint in the family because his Mother had to pay just over £2 to the doctor for his home birth, even though he did nothing. They had a friend attending who was a nurse. His sister was born 3 years later and cost nothing!

There have been so many people saying that they wouldn't be alive without the help of the NHS. Would you be able to pay for your operation? How much would your prescriptions all cost! A week-by-week insurance policy might find ways to wriggle out of paying for some things. So, most of us are very grateful.



What about the healing that Jesus did?

He made the blind to see, the deaf to hear, healed lepers of their disease, a lady of a flux of blood, evil spirits cast out. There were several people who had died who came to life again. That probably is beyond the NHS! Peter's Mother-in-Law was healed of fever. Remember the story of the paralytic who was let down through the roof. There were a few more who were crippled. There was the story of the man with the withered hand told in 3 of the Gospels. Matthew tells us about Jesus helping a man who couldn't speak. Luke tells us about a man with dropsy who was healed. What is dropsy? Apparently it's an abnormal swelling of the body. And Jesus healed the servant whose ear was severed when Jesus was about to be arrested in the garden.

But Jesus didn't heal everyone. Why did he heal those he did? In every case there was faith. Sometimes of the sick person and sometimes of those who brought them to Jesus. Faith is complete trust in someone or something. Those meeting Jesus would have heard of previous healings by Jesus and were sure that he could help them as well. Today Jesus gives us life, Jesus gives us peace if we put our complete trust in him.

Our Sunday services are in the Church at 11 am. We'd love you to join us for our worship and song. You will get a warm welcome. For those unable to attend in person we also stream our services.

For those interested in the history of Northall Baptist Church, a free copy of the booklet, *Rebels in Green Pastures* can be supplied or downloaded from our website:

<http://northallbaptistchurch.org/>

✉ Ruth Cox Tel: 07791 425625



... Let's Play **Tennis**...

Make 2023 the year to try something new!

WE OFFER JUNIOR SESSIONS AND ADULT SESSIONS

FOR MORE INFORMATION GO TO OUR WEBSITE OR CONTACT HEAD COACH SARA BAMFORD

If you are interested in Tennis we would love to hear from you.

Details of our Club regarding what's on offer and membership rates are available on our club website (ebltc.org.uk)

We offer a coaching programme for all ages and abilities and you don't even need a racket for these sessions to get you started or back into the game.

JUNIOR COACHING

MONDAY 4:00pm - 5:00pm

Mini Red (ages 4-8 years old)



MONDAY 5:00pm - 6:00pm

Under 16 Intermediate (ages 11-16 years old)



MONDAY 6:00pm - 7:00pm

Under 18 Advanced (ages 16-18 years old)



WEDNESDAY 5:00pm - 6:00pm

Under 16 Beginners (ages 11-16 years old)



These sessions CAN BE BOOKED online VIA

OUR WEBSITE www.ebltc.org.uk

ADULT COACHING

MONDAY 7:00pm - 8:00pm

Get Back Into Tennis



These sessions CAN BE BOOKED online VIA

OUR WEBSITE www.ebltc.org.uk

PRIVATE COACHING

1-2-1 Sessions are available with Head Coach Sara Bamford in 1 hour or 30 minute slots.



To book please contact Head Coach Sara Bamford directly.

★ **SUNDAY MORNING SOCIAL TENNIS** ★

10:00am - 12:00pm

ALL ADULT MEMBERS WELCOME

★★★★ ANNUAL MEMBERSHIP FEES ★★★★★

Adult : £105.00 / Family : £189.00 / Junior 11-18 : £30.00

Other packages are available.



Contact coach Sara Bamford on 07561 571578 or sara_leavy@hotmail.com to book your place on any of the coaching sessions.

TO FIND OUT MORE ABOUT OUR CLUB PLEASE VISIT OUR WEBSITE ebltc.org.uk



JENNI'S JURASSIC BARK
PROFESSIONAL DOG GROOMING

- ▶ OVER 10 YEARS EXPERIENCE GROOMING IN EATON BRAY.
- ▶ 1 TO 1 CARE FOR YOUR DOG
- ▶ FLEXIBLE EVENING APPOINTMENTS WITH PICK UP AND DROP OFF AVAILABLE
- ▶ EMMIPET TEETH CLEANING

FIND US ON FACEBOOK AND INSTAGRAM

CONTACT US ON WHATSAPP OR DROP US A MESSAGE 07580 343396

CDM Builders Ltd
07984086029

GENERAL BUILDING
NEW HOMES
EXTENSIONS
CONSERVATORIES
ALTERATIONS
BRICKLAYING
GROUNDWORK
PATIOS
DIGGER AND/OR DRIVER FOR HIRE

With over 20 years experience in the building trade

All aspects of work undertaken by our own professional tradesmen to a very high standard

Please contact Clive for a free quotation

T: 01582 203825 M: 07984086029

Email: Clive.munt@hotmail.co.uk

Springbank, Bottom Drive, Eaton Bray LU6 2JS

 **Stoten Gillam**
chartered accountants
chartered tax advisers

Our aim is to provide an outstanding professional, cost effective and friendly service

- ✓ Established over 50 years
 - ✓ Traditional values with forward thinking and modern technology
 - ✓ Full range of business and personal accountancy and tax services
 - ✓ Latest cloud software
 - ✓ Free initial meeting
- 
-  
- Tel: 01582 608601**
99 High Street South,
Dunstable, LU6 3SF

Contact us today:
enquiries@stotengillam.co.uk
www.stotengillam.co.uk
f @stotengillam

 **Nimby Pest**
WILDLIFE MANAGEMENT

...for all your pest solutions

Peter Tong
(RSPH Level 2)

01525 220653
07958 669706

Email: peter@nimbypest.org.uk
www.nimbypest.org.uk





DAGNALL
CHURCH OF ENGLAND SCHOOL

Nursery to Year 6 spaces available





Good

Edlesborough Primary Academy was labelled as "solidly good" by a trained HMI as part of a self-commissioned external review in November 2021.

"The school is going from strength to strength. The school is focused on outcomes, the curriculum is now scaffolded and pupils want to learn."

Trained Ofsted Inspector



EDLESBOROUGH
PRIMARY ACADEMY

Inclusive education that inspires inquisitive learners

01525 220431 · EPAManager@epa-primary.org · [epa-primary.org](https://www.epa-primary.org)

Edlesborough Primary Academy, High Street, Edlesborough, Dunstable, Bedfordshire LU6 2HS

Edlesborough Primary Academy is part of the Knowledge Schools Trust.

Welcome to **Butterfly Funerals**

Butterfly Funerals are specialist funeral directors Luton and owned and operated by Teresa Stack-Murray & Peter Murray, residents of Eaton Bray. If you have experienced a recent bereavement and don't know where to start then please call us on 01582 968130. We will organise everything for you, compassionately, professionally and at a reasonable price. Butterfly Funerals provide everything that you will need at this time for funerals and cremations throughout Bedfordshire, Hertfordshire, Buckinghamshire and the rest of England. This will include advice surrounding administration as well as service provision from other providers such as florists and headstone masons.

For the last 3 years, we have been in the top 3 funeral directors in Luton.

Pre Paid Funerals From Butterfly Funerals

If you are concerned about leaving a financial burden behind for your own funeral, Butterfly Funerals offer our pre-paid funerals service for you.

Our Services

Arranging a Funeral
Pre-need Funerals
Memorials
Funeral Flowers



Contact Us

☎ **01582 968130**

✉ **teresa@butterfly-funerals.co.uk**

🌐 **www.butterfly-funerals.co.uk**

📍 **39 Elm Avenue**
Caddington
Luton
Bedfordshire
LU1 4HS

All Trees & Hedges

Reliable & friendly service • Family run business
Competitive prices • Qualified advice • Fully Insured

Tree work undertaken

Tree felling • Precision dismantling • Crown reduction
Crown thinning • Crown lifting • Formative pruning
• Stump grinding • Stump removal
Deadwooding • TPO / conservation area work

Hedge work undertaken

Hedge reduction • Hedge planting • Hedge trimming
Shrub clearance • Hedge laying

Other Services

Fencing • Green Waste Recycling • General
Garden Maintenance • Tree Lighting • Logs / Kindling

CALL NOW ON:

07701 094 934
01525 220 823

E: info@alltreesandhedges.com

W: www.alltreesandhedges.com



Your local

GUTTERBUSTER

cleaning & repairing your gutters

01442 874540
07749 977997

adam@localgutterbuster.com



Parties Wedding Receptions Stage Productions

Fitness Classes Business Meetings Beer Festivals

Film Shows Club Meetings Keep Fit Quiz Nights

Eaton Bray Village Hall

Capacity for 220 People Parking for 70 Cars Meeting Room Countryside Views

Bar Facilities Kitchen Facilities Full AV Facilities Baby Changing Wheelchair Access



For bookings or enquiries call: 07975 797 202
email: bookings@ebvh.co.uk

www.ebvh.co.uk



CALVI COLLECTIONS

- MADE TO MEASURE FURNITURE
- ANTIQUE FURNITURE
- SALVAGE YARD

Family run business established for over 30 years



Tables & made to measure furniture



Antique furniture & decorative ornaments



Architectural salvage & reclaimed timber

Trevere, Springfield road, Eaton bray, LU6 2JT
Tel: 01582 663 673 Email: info@calvicollections.co.uk

www.calvicollections.co.uk



Westrope Butchery
Makers of Bunkers sausages

**17 The Rye
Eaton Bray
LU6 2BQ
07805 082787**

Opening hours

Tuesday - Friday 08:30am - 5.30pm

Saturday 08:30am - 4pm

Sunday 08:30am - 12pm

**Find us on social media - The Westrope Butchery
Local farmers & family butchers
www.thewestropebutchery.com**

Laptop & Computer

Server, Printer, Apple, Setup, Repairs,
Data recovery, Internet, Wireless, Network,
Virus infection, Home/Office computer problems.
Services from £40.

Your local IT support, 7 days services, we visit you

No Fix - No Fee

Qualified, Experienced

PClaprepairs@gmail.com

01525 306316 – 07925 338435

WHITE WATER

Driveway, Patio & Decking Cleaning

01582 471692 | 07738 434787
email: info@white-water.co.uk
www.white-water.co.uk

Jason Owen

Quality Painting & Decorating

Dagnall based decorator with over 35 years
experience. Free quotes, friendly and tidy
service.

0790 179 8419

jasonowen61@hotmail.com

Crittercare

Dog walking & pet sitting

We look after any animal from

Hamsters to horses

Prices start from £8 per day

Tel: 07756930814

Email: crittercare142@hotmail.com

Or find us on Facebook @crittercare142



Roasted Summer Vegetables

By Barney Desmazery, courtesy of bbcgoodfood.com

Ingredients

3 tbsp olive oil
1 aubergine, cut into chunks
2 mixed coloured peppers, such as orange and red, cut into chunks
1 red onion, cut into wedges
2 courgettes, cut into chunks
4 garlic cloves, smashed
3 sprigs of thyme
200g cherry tomatoes
handful of basil leaves
zest of 1 lemon
50g feta, crumbled

Method

Step 1 - Heat the oven to 200C/180C Fan/gas 6. Mix the oil with the aubergine, peppers, red onion, courgette, garlic and thyme in a bowl with sea salt and black pepper. Tip into a large roasting tin then roast for 30 mins.

Add the tomatoes to the pan and return to the oven for 10 mins.

Step 2 - Squeeze the garlic from their skins, remove the thyme then scatter over the basil, lemon zest and crumbled feta.



www.eblions.co.uk

Come and play fun team football within our village community Our coaches are FA Qualified and CRB checked

EB Lions, your local youth football club, are looking for keen boys and girls from age 4 upwards to join our friendly and inclusive club based in and around Eaton Bray, Edlesborough, Dagnall, Kensworth, Slapton, Totternhoe and the surrounding area. We have many teams and over 200 players playing exciting team sport! We welcome new players at any age group to start playing football within our village community. We are specifically looking for players for the teams below:

Saturday teams

U7 (Year 2)
U13 (Year 8)
U17 (Year 12)
U18 Goalkeeper (Year 13)
U18 girls (Years 11/12/13)

Sunday teams

U12 (Year 7)
U15 (Year 10)
Ladies (Age 16+) incl. goalkeeper

(school years from September)

Please get in touch if you want to play, we have teams at most age groups. Contact us at enquiries@eblions.co.uk.

Flying Ants

Each summer, there comes a moment when we suddenly notice that the ground is crawling with large winged ants. Then the air seems to be full of them and we find ourselves ducking and diving, trying not to get them in our mouths or hair. So what causes this simultaneous taking to the air, and is there really such a thing as flying ant day?

What are flying ants?

Flying ants are known as alates. In the UK, particularly in urban areas, the winged insects you see are almost always the sexually mature queens and males of the black garden ant. The larger ants are the queens. They can be up to 15mm long.



When is flying ant day?

This annual swarming event usually occurs in July or August and coincides with a period of hot and humid weather. However, swarms of flying ants can appear any time between June and the start of September. They appear at different times around the country and local weather conditions are critical for the coordination of swarming activity. Ants tend to fly earlier in urban areas than rural areas, probably because temperatures are generally warmer in urban environments, known as the urban heat island effect.

A multi-year citizen science project by the Royal Society of Biology found that the widely held idea of a 'flying ant day' is actually a misconception: there is no single day when ants fly all at once. Rather, there is a 'flying ant season'. Winged ants actually emerge over several weeks, although there are often several peaks in appearances, each lasting only a few days. The precise pattern of swarming varies from year to year.

Swarming is triggered by the weather: the study found that ants only flew on days when it was warm, not windy and conditions had improved compared to the previous day. There is also anecdotal evidence that flying ant days often occur after some summer rain.

Where do flying ants come from?

Prior to swarming, ants are going about their everyday business and living in a colony in a nest. Black garden ants nest in dry soil. You'll often find them in flower beds, lawns, and under paving slabs or stones. They are common in almost any dry, open area that is warmed by the Sun - including gardens, pavements, brownfield sites, heathland, grassland and coastal areas. In the few weeks before the swarming event, you may see heaps of soil appearing above the nests.

Ants live in a caste system, where individuals have specific jobs. The queen lays the eggs while female workers look after the queen, eggs and larvae. They also gather food, enlarge the nest and otherwise ensure the colony runs smoothly. Most of the eggs develop into workers, but when the colony is ready, the queen begins to produce virgin queens and males.

When the winged males (drones) and virgin queens (princesses) emerge from the nest, they scatter to maximise the chance of mating between different colonies and reduce inbreeding.

Why do ants fly?

An ant colony can only expand so much. At some point a new queen will need to strike out on her own to begin a new colony. She needs to meet and mate with a male from a different colony and find a new area in which to start building her nest. Growing wings and flying enables her to do this. So each year, alates emerge from nests and take flight. They aren't interested in people or picnics - they are just looking for a mate. The large winged females and the smaller winged males are often seen flying joined together. This is known as the nuptial flight.

Why do ants swarm?

Why do flying ants appear in such large numbers all at once? One reason is that this gives them protection from predators as there is safety in numbers. Another reason is to increase the chance of reproduction, with larger numbers of their species around the ants won't have far to look for a mate. During this brief, once-in-a-lifetime mating period, a queen usually mates with several males.

What happens after the nuptial flight?

Once ants have mated, the role of the males is over. The mated queens quickly chew off their own wings and begin looking for a suitable site in which to nest and set up a new colony. You may see large ants walking around after a 'flying ant day' and discarded wings. Once the queen has found a suitable site, she digs an underground chamber and lays her first few eggs, which she rears to adulthood. She won't eat for weeks, until her first brood of daughter workers are ready to forage for food for her. The ants you see the rest of the year are female workers, gathering food for the colony. The sperm the queen received during the nuptial flight enables her to lay fertilised eggs for the rest of her lifetime. She has many egg-laying years ahead of her, often reproducing until a colony is thousands strong (large nests can have more than 20,000 workers).

How long do flying ants live?

Males don't do any work in the nest and are only produced by their colony during flying ant season. They develop from unfertilised eggs. After the nuptial flight, the male ants usually only live for another day or two. Their sole reason for existence is to mate with new queens.

Queens can generally live for up to 15 years (although in captivity have reached 28 years) But they spend most of their lives in their nest. They only spend a small portion of their lives as winged or flying ants - when they are young queens that need to establish a new colony of their own.

Why flying ants are actually a good thing

These flying insects may seem annoying to some people, but their tunnelling activities play a vital role in improving soil quality. Their swarming events also provide a vital food resource for many species of birds. Swifts and gulls can often be seen feeding frenziedly from rising swarms of ants. The black garden ant and the related cornfield ant are particularly important to the continued survival of the silver-studded blue butterfly on heathland. Populations of this attractive butterfly have declined across most of its range. The ants and the butterfly have developed a mutually beneficial relationship. The ants tend the caterpillars, protecting them from predators. In return, the ants feed on secretions produced by the caterpillars.

Ants in the UK

Ants, along with bees and wasps, belong to the insect group called Hymenoptera. They are recognised by their three fairly distinct body parts.

There are about 60 species of ant in the UK, and they all live in complex colonies. The types of ant you see flying will depend on where you are. For example, in woodland you may see wood ants.

All ants require good weather to fly, with no rain or wind. The temperature and humidity that triggers swarming and flight is different for each species, so the timings of their nuptial flights will vary.

Do red ants fly?

The nuptial flight is an important phase in most ant species' reproduction. Red ants are among the other common ant species in Britain that grow wings and swarm. However, in the flying ant surveys conducted by the Royal Society of Biology, nearly 90% of the winged ants observed were black garden ants, also known as the common black ant.

Saying No

One of the greatest things we have to learn in life, is saying no, gracefully.

Saying no to people who want you to do things for them, saying no to people who want to spend time with you, saying no to people that invite you to things, and saying no to yourself too.

Saying no, without any guilt or justification, saying no, not because you're busy doing something else, not because you don't care about the person, not because you're stressed out or ill, and not for any reason other than that your inner knowing says no.

Your inner knowing says no, because it senses a higher purpose or need (often simply to be with oneself), or that there is a deeper yes to something else that you can or can't see yet.

At times life is throwing a thousand things at us, an endless number of hands and tasks waving at us, expecting us, as we expect of ourselves, to say yes.

We believe that we should do, agree, go, say yes. We believe that others should come, do, respond, say yes to us.

Although we know otherwise, there is a deep underlying belief that no is bad word, and must only be spoken when followed by a justifiable excuse that every person may logically comprehend.

But how is yes so innocent when it is rotten to the core with denial of one's inner knowing, of abuse to one's soul?

No should not be burdened with guilt, should not be spoken as a reaction, should not be felt with stress. No should be felt with as much love and peace as yes.

For no is an ambassador of divine truth that creates space for divine alignment, whatever that may be.

May we purify in the fires of consciousness our most fundamental choice of response to the world: yes and no.

Let these words be spoken with the utmost truth resonating from deep within, let them be the whole sentence, and let them be spoken with grace and nobility.

✍️ Karen Inka Aiyana

Are you concerned about the impact of aircraft noise from Luton traffic?

The **new expansion Plans** for London Luton Airport would result in **50 - 80% more flights** over the villages, with Dagnall being directly under the final approach flight path.

Cllr Wilkinson has analysed the complaints lodged by Edlesborough Parish residents over the past few years and found very few complaints are made.

If you are troubled by aircraft noise, make sure you complain and keep complaining – LLA are obliged to listen and may even change policy if enough regular complaints are made.

Would you like to complain but are unsure who to complain to or how to go about it?

There is a relatively straightforward process that is explained in the following link

<https://www.london-luton.co.uk/corporate/community/noise/making-a-noise-complaint>



London Luton Airport

**Registering a noise complaint using
the TraVis flight tracking system**

Down the Lane

This splendid flower is a Phormium, a native of New Zealand. The plants have spiky leaves and are hardy. Every year they surprise me when they flower! Behind is a rose which I didn't have chance to prune. It has been covered with blooms and there are more buds developing. There are some hollyhocks in the photo as well. I grow ones with single flowers as they attract bees. I'm thinking about sowing some seeds soon for more plants to flower next year. There's always room at the back of a border for hollyhocks.

I'm catching up on lots of weeding at present. There's been enough rain recently for thistles to be removed easily. I didn't realise how many different sorts I had growing in the flower beds. There will still be plenty around the rest of the garden for goldfinches and other wildlife to feed on. I also have to weed an area of gravel in which I'm growing thyme. Gravel is a good mulch for suppressing weeds but is also good for germinating weed seeds which land on it. The thyme forms a lawn which is much easier to maintain than grass – occasional weeding and an annual trim. There is a wonderful aroma when I walk on it and bees and butterflies love the flowers. I have tried growing chamomile but some of it dies off in the winter and I had to buy new plants in the spring.



Part of the garden is screened off with a trellis. Last year 3 pyracantha plants were growing up. I lost 2 in the winter and have replaced them with 2 cotoneasters which I bought by mistake instead of pyracantha. They are also evergreen with red berries which the birds prefer. Pyracantha berries always seem to be the last to be eaten over the winter. A summer

flowering jasmine growing up the trellis succumbed to last winter's cold weather so I cut it back to the ground. I have just discovered that it has some green shoots so I hope that it will flower again next year as it has the most gorgeous scent. The photo of the sweet peas on the trellis shows how to tie a plant to a support. Using twine, I make a clove hitch knot around the support. This knot is easy to loosen if you need to move the twine. The ends of the twine are tied around the plant so it doesn't come into contact with the support, where it could be damaged. I use a bow or half bow which is easy to adjust as the plant grows. The same principle is used for trees and shrubs which need staking. The ties need checking occasionally to make sure that they are not tight around the stems and loosened if necessary.



✍️ Sally Taylor



Eaton Bray W.I.

It has been a busy year for Eaton Bray WI. In May, Helen Fairmaner gave a most interesting talk on the 1921 Census and helped one or two of the members trace their ancestors.

We visited Ashridge Gardens on 22nd May and enjoyed a talk about the history of the gardens, admired the beautiful Rhododendrons and treated ourselves to a cup of tea and cake in the new café.

In June Ken gave a most interesting and informative talk on the 'Waterways Experience' The first Canals were started in 1794 to enable coal, wheat and other goods to be moved much more easily around the country. Eventually there were over 900 miles of Canals being used but, with the introduction



of the railways, many of the canals fell into disrepair and it was not until the early 1950s that the canals were gradually restored and are now used mainly for leisure purposes.

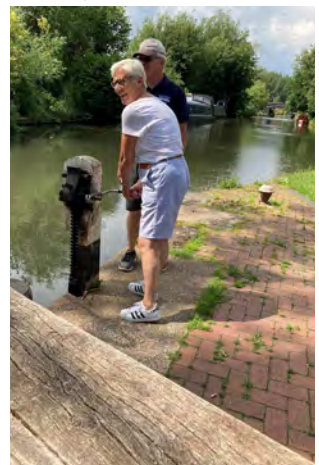
The Waterways Experience is a charity, run by volunteers, whose boats are purpose built for the needs of wheelchair users. The money raised by the trips is used to organise holidays for disadvantaged children.

On the 19th June we had a lovely day out on the canal at Nash Mills and enjoyed a splendid fish and chip lunch.

At the July meeting Steve Burnage gave a most interesting talk on Alternatives to Fossil Fuels with many questions being asked, in particular about installing heat pumps in our homes in the future. A visit to Pecks Farm Shop Café for Afternoon tea was much enjoyed by the members and our thanks went to Fiona Peck for organising such a delicious spread for us

A visit to Stowe House is next on the agenda, before our Harvest Supper on Monday 4th September.

Eaton Bray WI meets at the Methodist Church Hall, Totternhoe Road, Eaton Bray at 7.30 p.m. on the first Monday of each Month and ladies of all ages are most welcome. If you are interested in coming to the meeting please contact Margaret Jones on 01525 220991.





The Heritage Park - Pitstone Green Museum

History of Pitstone Green Farm



The farm, as you see it today, was largely built by the Countess of Bridgewater and is unusual in that it has been occupied by the Hawkins family since 1808, before most of the farm was built in 1830. It was built close to the site of earlier farms, one of the old buildings still remain to this day. Most prominent of these is the Big Barn, a section of which dates from the 17th century and was transported to the site when the farm was built in the first half of the 19th century.

The Pitstone Local History Society was formed in 1963, later to become the Pitstone & Ivinghoe Museum Society. Inspired by David Wray, they began collecting almost anything associated with farming and rural life in the locality. The collection was initially housed at Don Levy's Vicarage Farm, Ivinghoe but then moved to Pitstone Green Farm when further space was needed.

In 1991 a 99 year lease on the 1831 farm was granted to the Pitstone Local History Society (now Pitstone & Ivinghoe Museum Society) by Jeff Hawkins, the then owner of the farm. On the death of Jeff Hawkins in 2001, Pitstone Green Farm was gifted to the National Trust and forms part of the Ashridge Estate. The Ashridge Estate comprises 5000 acres of beautiful countryside ranging from magnificent woods, commons, downland and farmland which support a rich variety of wildlife, including carpets of bluebells in spring, rare butterflies in summer and the fallow deer rut in autumn.

The Bridgewater Monument, Pitstone Windmill and Pitstone Green Museum provide insights into the people connected with the Estates past.

Pitstone Green Museum Attractions

The Heritage Park, Pitstone Green Museum, is a fascinating blend of attractions from the past, based in the once redundant buildings of an old Victorian farm. Nestling in the shadow of Ivinghoe Beacon, it captures the spirit of a bygone age when life was harder but slower than it is today. We have more than forty different locations including displays. On our open days, several locations have a volunteer on hand to demonstrate or just answer your questions.

Entry £10 adults Children £4.

Entertainment varies during the season and may include:

Military Vehicles * Classic Cars * Country/Morris Dancing
Traction Engine * Hand bell Ringers * Medieval Archery

Our regular attractions are: -

Pottery Demonstrations * Barn & Stationary Engines * Working Model Railways
Crossley Gas Engine * Lace Makers * Museum Shop
Working Rack Saw * Tractor Rides to Windmill * Craft Stalls

On our published open days, catering provides hot snacks (bacon roll) to order, assorted filled rolls/sandwiches, hot and cold drinks and a variety of cakes. 2023 open days; 13th & 28th August, 10th September, 8th October. www.pitstonemuseum.co.uk

Whipsnade Tree Cathedral

Whipsnade Tree Cathedral is a 9.5-acre (3.8 ha) garden in the village of Whipsnade in Bedfordshire, England. It is planted in the approximate form of a cathedral, with grass avenues for nave, chancel, transepts, chapels and cloisters and "walls" of different species of trees.

The tree cathedral was planned by Edmond Blyth in the 1930s as an act of "Faith, hope and reconciliation" in response to his memories of World War I. As a cadet at Sandhurst in 1916 Blyth had made close friends called Arthur Bailey, John Bennett and Francis Holland who were all killed prior to the end of the war. In 1930 he paid a visit to Liverpool Cathedral,



The South Transept of Whipsnade Tree Cathedral



The outer "wall" of the cathedral

at the site was held in 1953, and services continue to this day.

The outer "wall" of the cathedral
In 1960 the Tree Cathedral was accepted as a gift by the National Trust. The independent Whipsnade Tree Cathedral Fund is responsible for the religious use of the site. Services have been conducted by many different denominations. It is Grade II listed on the Register of Historic Parks and Gardens. The Tree Cathedral contains chapels meant for each of the four seasons.

which was then under construction. Blyth wrote: "As we drove south through the Cotswold hills on our way home... I saw the evening sun light up a coppice of trees on the side of a hill. It occurred to me then that here was something more beautiful still and the idea formed of building a cathedral with trees." Work began in 1932 and continued in stages. The site became overgrown during World War II, but development recommenced after the end of the war. The first religious service



The Nave of Whipsnade Tree Cathedral



PARAMOUNT
PLUMBING & HEATING



0%
FINANCE
AVAILABLE

A team you can put your trust in.

Here at Paramount Plumbing & Heating, we believe that trust and reliability is what makes us stand out from the rest. With over 30 year's experience, we have the knowledge to overcome any issues and deliver an outstanding customer service.

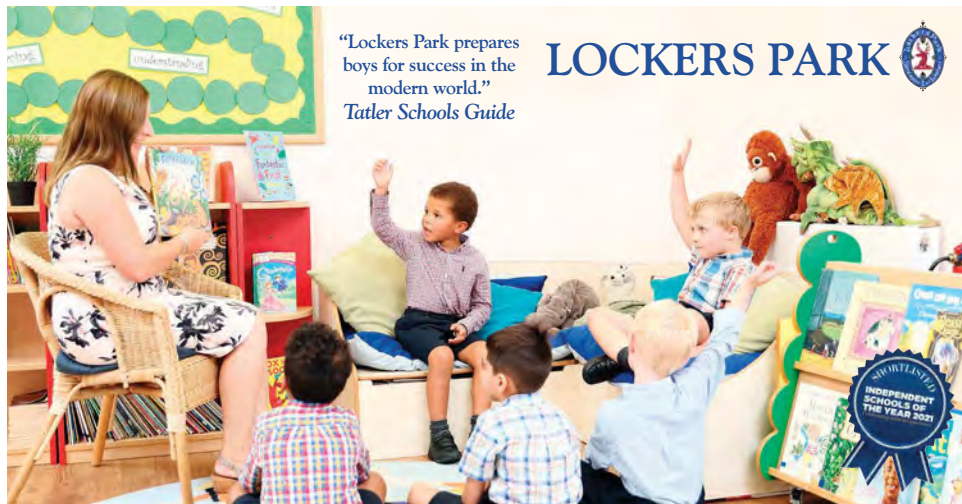
Contact us today for your free quotation.



- ✓ Boilers and Boiler Breakdown
- ✓ Heating Systems and Bathrooms
- ✓ Air Source Renewables
- ✓ Servicing and Maintenance
- ✓ Landlord Safety Inspections
- ✓ Power Flush



☎ 07810 115 611 ☎ 07917 054 045
✉ info@paramountplumbing.co.uk
🌐 www.paramountplumbing.co.uk



“Lockers Park prepares boys for success in the modern world.”
Tatler Schools Guide

LOCKERS PARK



Join a Stay & Play Session

Children and their parents are welcome to join a fun lesson and play time in our Pre-Prep and meet our Reception Teacher and Headmaster.

Regular Stay & Play Sessions throughout the year.

Visit lockerspark.co.uk to book.

Excellent results | Enthusiasm for life

A purposefully small prep school for boys aged 4-13 | Boxmoor, Hertfordshire

Edlesborough Flowers



Flowers For All Occasions

Hand Tied Bouquets

Flower Arrangements



Novelties & Gifts : Candles & Diffusers

Tel: 01525 221920

www.edlesborough-flowers.co.uk

Email: info@edlesborough-flowers.co.uk

2 High Street Edlesborough LU6 2HS

A pet friendly taxi company offering individual or group bookings of up to 7 people, tailored to your needs.



SPECIAL OFFER

10% off for new customers!

transportelite365@outlook.com

07732116452

OUR SERVICES

- › Airport & Cruise Transfers
- › Corporate service
- › Special event transfer
- › Wedding & concerts
- › Chauffeur service
- › Meet & Greet Service

OUZEL CONTRACTING

Providing quality, experienced horticultural services to the villages

Services include:

- Year-round Garden Maintenance
- Mowing and Lawn Care
- Hedge Cutting
- Bed and Border Maintenance
- Pruning, including Roses and Wisteria
- Planting Services
- Weed Control
- Leaf Clearance

Fully insured, fully qualified with 20 years' experience
Licensed waste carriers

For a free quote call Kieran on

07800 888120

www.ouzelcontracting.co.uk



Charlotte Lyons
Physiotherapy

Physiotherapy Clinic

In Leighton Buzzard

Open Monday to Saturday

Providing Expert Clinical Care

Providing Treatment for: Muscle, Joint, and Nerve Injuries, Sports Rehabilitation, Post-Op Rehabilitation and Dizziness.

Book an appointment at:

Craven House

**Water Lane, Leighton Buzzard
LU7 1FA**

www.charlottelyonsphysiotherapy.com

charlottelyonsphysio@gmail.com

07446 765945

BELLOWS MILL

Eaton Bray



Idyllic setting for weddings, family parties, corporate events and funerals.

For more information or to arrange a viewing contact Rachael on 01525 220548 or email reservations@bellowsmill.co.uk

www.bellowsmill.co.uk

We are based in Eaton Bray

YourNewBoiler.com[®]

A family firm, built on recommendation

Boiler On The Blink?

Call for a **FREE**, NO-OBLIGATION
Quotation Now

01525 620247



Proud Sponsors of EB LIONS U8's
Football Team



Web - www.YourNewBoiler.com // Email - rebecca@yournewboiler.com



BOSCH



To us, it's not just another funeral. We care for your loved ones as though they were our own.

NEVILLE. Because there is a difference.

DUNSTABLE

Globe House, 84/88 High Street South LU6 3HD

t: 01582 320290

e: dunstable@nevillefuneralservice.com

www.nevillefuneralservice.com



Come for Coffee at St Mary's, Eaton Bray

For a warm welcome
and a cheering cuppa
each month in
St Mary's Church
Eaton Bray
10.30am - midday



1st Saturday of each month
(except July - 2nd Saturday)

PLUMBING & HEATING ENGINEERS

OUR SERVICES INCLUDE:

- General Plumbing
- Boiler Servicing / Breakdowns / Aga & Rayburn Servicing
- Full Boiler Installs & System Upgrades

We work on Oil, LPG & Natural Gas - We are members of Gas Safe & OFTEC

CONTACT JUSTIN

Mobile 07770 918101

Office 01525 220262

Email justin@prmechanical.co.uk

WWW.PRMECHANICAL.CO.UK

All major credit cards accepted



A committee run pre-school set in Dagnall Village Hall for children aged 2 to school age

We operate five mornings a week from **9:00 - 12:00**



Ofsted Comments

- Staff are consistently kind and caring which supports children to develop confidence and resilience
- Teaching is consistently good and children's safety is given the highest priority
- Children learn good manners and know how to treat each other with respect

If you think your child would be happy here please phone our Pre-School Leader, Ann Tobin on 07816 358 342

www.dagnallunderfives.co.uk

19 High Street, Leighton Buzzard, LU7 1DN
 therefill@outlook.com
 www.therefill.co.uk

No single use plastic.
 Fill your own pots
 or use our paper bags.

Over 370 products.

Organic
 & ethically sourced.

Budget friendly:
 only buy what you need.

Online order and deliveries available.

Check our website
 for more details!

RED LION

**Lunch , Evening
 Meals & Takeaways**

Childrens Sandpit • Outdoor Seating





Call us to book on:
 01442 843020

Order a takeaway on:
 01442 842277
 (delivery available to the villages)

Bespoke menus available | Vegetarian, vegan & gluten-free options available

Helping you
put down roots

SUCCESSFULLY SELLING & LETTINGS PROPERTY
IN HERTS, BEDS & BUCKS



*Join our wildflower
garden competition*

Fine & Country Edlesborough
65 Moor End | Edlesborough | Buckinghamshire | LU6 2HN
01525 222 333
edlesborough@fineandcountry.com

FOR MORE INFORMATION, PLEASE VISIT FINEANDCOUNTRY.COM

FINE & COUNTRY
fineandcountry.com™

PRINTS INSPIRED BY THE OLD RAILWAY POSTERS

Designed in Eaton Bray
by Tabitha Mary



www.tabithamary.co.uk



tm TABITHA MARY
Creating Travel prints since 2012



Electrofit Industrial Solutions
Environmental Solutions for industry

SAVE MONEY ON FUEL



and

Improve maintenance on
your vehicles

Providing solutions for
industry for over 30 years

Please contact us on the details below
to find out more:

Tel: 07826 879322

Email:

s.noble@electrofitsolutions.org

Coffee Tavern



Large Hall £10.00 per hour

Commitee Room £5.00 per hour

Large Hall & Commitee Room £15.00 per hour

Bookings 07836240467

Stairlift, access ramp and free WiFi available



**CIVILISED
SURVEYING
SERVICES**

RPSA
Residential Property
Surveyors Association

Residential Building Services

- > Building Surveys
- > Home Buying Surveys

We are here for you to discuss which survey is suited to your exact needs whether you're buying a new home or worried about defects in your current home.



Please call us first for friendly, expert advice

07429 101739

surveyor@civilisedsurveyingservices.com

WWW.CIVILISEDSURVEYINGSERVICES.COM



**Santa's
Mobile
Salon**

*Styles for
everyday
and
every
occasion.*

*Colour, cut, blowdry and
upstyles.*

*Fully mobile hairdressing from
the comfort of your own home.*

*Based in Eaton Bray, LU6
0788 3638 170
santaholmes1@gmail.com*

 *@santa.salon1*



**Race Engine
Developments**

- engine rebuild and development -
- track side support and assistance -
- magnetic particle inspection (mpi crack testing) -
- light machining and turning work -
- injector calibration and ultrasonic cleaning -



**RED
Vapour
Restorations**

- alloy wheel preparation and repair -
- antique metal restoration -
- chemical blacking - component cleaning -
- creation of a reactive surface for coatings or bonding -
- deburring - die cleaning -
- paint stripping - peening -
- surface cleaning -

Colin Holmes
07883 471560
raceenginedev@gmail.com
Eaton Bray, Bedfordshire

 @RaceEngineDevelopments
 @red_vapour_restorations

Explore... Dream... Discover...

Travel Impressions are specialists in tailor-making holidays to destinations worldwide. If you are thinking of travelling to Canada, USA, Australia, New Zealand, Southern Africa, South America, Asia, India, Sri Lanka, China, Japan or within Europe, please call or email us.

We can help you create the best itinerary, as we offer:

Personalised planning - we take the time to get to know you • Friendly, honest advice from an independent travel agency
Extensive experience to arrange every detail • Using fully bonded tour operators • No booking fees



Travel Impressions

A World of Experience

01442 890265



enquiries@travelimpressions.co.uk
www.travelimpressions.co.uk

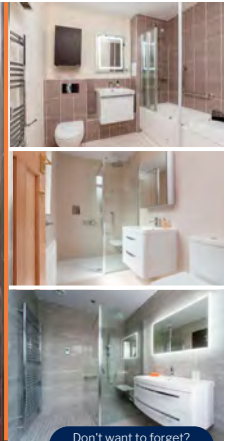
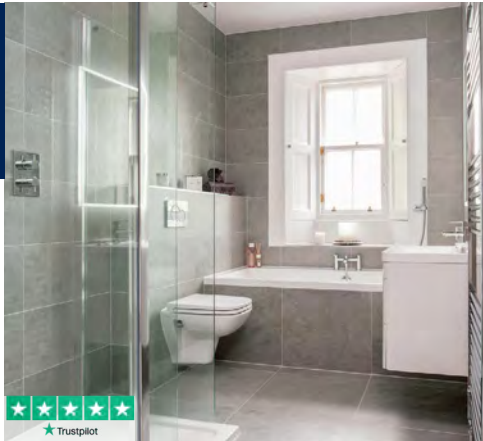
Suite 4, George House, 64 High Street, Tring, Herts. HP23 4AF

**12 MONTHS BUY NOW
PAY LATER 11.9%
REPRESENTATIVE
APR
& 0% FINANCE**

**ADAPTING YOUR
BATHROOM
SHOULDN'T FEEL LIKE A
COMPROMISE**

Choose BMAS:

- ✓ 26 years' expertise & thousands of bathrooms installed
- ✓ Full design and installation
- ✓ High-quality products for safety & comfort
- ✓ Showrooms across England & Scotland
- ✓ Traditional customer service (no call centres)
- ✓ 0% Finance available



**Call us today for your FREE no-obligation
home consultation and bathroom design**
01462 889 097
bathingmobility.co.uk

Visit Our Showrooms:
Bathing Mobility Advisory Service
67 Hermitage Road
Hitchin, SG5 1DB
Open 9am-5pm Monday - Friday
10am-4pm Saturday

Don't want to forget?
Scan our QR code to book
a call back when suits you



Credit is subject to status and affordability. Terms and conditions apply. Authorised and regulated by the Financial Conduct Authority. Bathing Mobility Advisory Service Limited, FCA Register no. 819781 is an appointed representative of Mobility Bathing Group Limited, Unit 20-21 Padgett Lane, Redditch, B98 0RA, FCA Register No. 673828. Credit is provided by Novuna Personal Finance, a trading style of Mitsubishi HC Capital UK PLC, authorised and regulated by the Financial Conduct Authority (Register No. 704348).



**Eaton Bray
Cricket Club**
(Est 1914)

- 2 Teams FCCL**
- 1 Team Beds Sunday League**
- 1 Team Village T20 League**
- 1 Team Ladies Softball**
- 6 Junior Teams U15 2xU13**
- 2 x U11 U9**

Good on & off field facilities
**Come and join a progressive
family friendly cricket club.**

**For more information
contact us on Facebook
& Twitter
@EatonBrayCC**



**Sense & Learn
Baby Massage**

**5 week baby
massage courses**

From birth to one

- Enhances bonding and attachment
- Helps you understand baby's non-verbal cues
- Improves sleep
- Helps to relieve wind, colic and constipation

Group courses running locally ♥ 1:1 Home visits available

f @Sense & Learn i @sense.learn

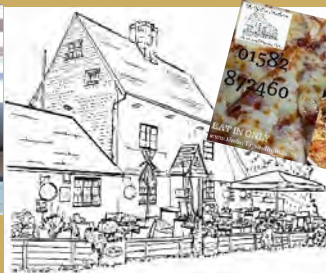
For class details and availability contact Kathryn **07713 283 288**
sense.learn@gmail.com

Nikki, Phil & The Team Welcome you...

To The 500 year old Bell...clean, safe, ventilated.



SELECTION OF GIFTS AND TREATS FOR THE HOME.

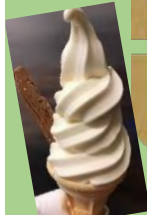


2 FOR 1 ON EAT IN FRESH DOUGH PIZZAS ON MON & THURS FROM 5.



The Bell in Studham

**THE NATIONAL
PUB & BAR
AWARDS 2018
COUNTY WINNER**



"For Food & Gifts we Love!"

Order TAKE AWAYS & WINE BY THE CASE with Discounts!

RESERVATIONS: 01582 872460



"An Award Winning Pub with Great Views!" ..

www.thebellinstudham.co.uk

Dunstable Rd, Studham, Beds. LU6 2QG

Email: info@thebellinstudham.co.uk **Vegetarian & Vegan Dishes freshly prepared**
ITALIAN & ENGLISH FOOD~DRINK~GIFTS~HOME DECOR~GIFT VOUCHERS~

Sears & Co

village & country estate agents



Our new Edlesborough office is now open

Considering selling or renting a village property?
Contact our team for a free valuation.

Call 01525 657 330 or **visit** www.searsandco.co.uk

3 Summerleys, Edlesborough, Buckinghamshire. LU6 2HR

E villageandcountry@searsandco.co.uk

Dagnall Weather Station (AONB)

Weather Conditions for June 2023



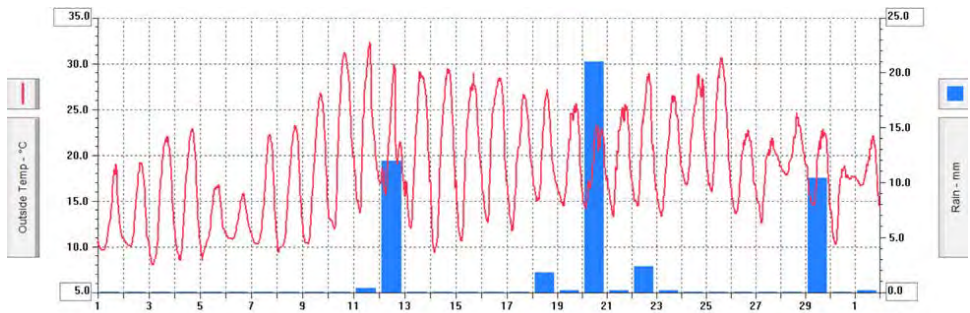
Elevation: 450 ft - Latitude: 51° 50' 13" North - Longitude: 0° 33' 34" West

June started with temperatures around average for the month with no rain for the first ten days. On the 9th, the temperature rose to 26.9°C and, by the 11th, reached the month's maximum of 32.6°C. The very hot weather continued until the 26th when we returned to normal June temperatures. While a lot of places in the south east had very little rain, here in Dagnall we had 48.6mm. As you can see from the chart below, most of this fell across only three days, but with temperatures so high the evaporation was such that the garden didn't get much benefit.

Rainfall was 15% down on average. In comparison to other Junes, 2012 saw 154mm and 2018 only 2.8mm. It was a very hot month with four days above 30°C and 16 days when the temperature reached above 25°C; ten of those on consecutive days. We also had ten days when night temperatures were at least 15°C. Wind was dominant from the north east, giving a chilly breeze, particularly at the beginning of the month.

	High	Date/Time	Low	Date/Time
Temperature:	32.6°C	11 June 15.00	8.1°C	3 June 03.30
Mean Temperature	18.5°C			
Dewpoint:	18.9°C	12 June 20.00	5.5°C	2 June 07.30
Humidity:	96%	20-23 June	28%	16 June 17.00
Barometer:	1025.1 mb	5 June 00.00	1004.6 mb	30 June 23.30
Wind Speed	31 mph SSE	12 June 15.00	Month avg	4.7mph
Wind Chill:	32.9°C	11 June 15.00	6.4°C NNE	3 June 03.30
Dominant Wind:	NE			
Rainfall * T= total rain days and moisture. R= Actual rain				
*Rain Days: 9(T), 9(R)	Wettest Day 20 June		21.0 mm	0.827 ins
Monthly Rain:	Total	June 2023	48.6 mm	1.913 ins
Yearly Rain:	Total	6 Month	374.1mm	14.728 ins

June 2023 Temperatures and Rain Fall



For weather data 24 hours a day, updated every 15mins, this site forecast and much more, visit: www.dagnallweather.co.uk and http://bit.ly/weather_dagnall. If anyone has a question, comment or wishes to contact me please email: david@dagnallweather.co.uk or telephone: 01442 843883. Dagnall weather now has an app for your iPad & iPhone! Just go to the apple store, search for Wunderstation and follow the instructions to Dagnall Weather Station. Now updated every minute.

Chick Adopted by Flamboyant Flamingos at Whipsnade Zoo

Abandoned egg hatches to adoptive parents after dedicated keepers step in

A flamingo chick has been adopted by new parents after being abandoned as an egg - first spending a month in an incubator where dedicated zookeepers could ensure the hatchling's survival. Whipsnade Zoo birdkeeper Emily Merrick-White said the team had rescued the abandoned egg and monitored it for 32 days at the zoo's specialist bird nursery, before carefully transferring it to a flamingo nest where the new feathered couple - named Florence and Freddie - took the egg under their wing.

After hatching on Monday 19 June, the flamingo family have been bonding at the conservation zoo, with both adoptive parents caring equally for the fluffy grey two-week-old.

"It's important we step in and support the American flamingo flock whenever an egg is abandoned by its parents, especially as when left alone the eggs are at risk of predators. By incubating the eggs in our specialised bird nursery, we can make sure the chicks have the best chance of survival and ensure that Whipsnade Zoo has a healthy and strong flock of flamingos," she said.

"The new chick is easy for visitors to spot, as it definitely stands out from the flamboyance - the collective term for a flock of flamingos - because of its light grey colour. The youngster won't develop the iconic pink and orange hue the species are known for, for another year or so. In the meantime, the chick is being fed a bright red "crop milk," by both parents - this unusually coloured nutritious 'milk' is made in the linings of their digestive tracts, and contains fat, protein and blood cells."

Emily added that the team were still waiting to find out whether the hatchling is male or female, but that the chick is becoming more and more confident by the day, as it explores its wetland home in the Dunstable Downs.

While American flamingos are currently found in healthy numbers in the wild, their main threat is the same as for other species living in important wetland environments - habitat destruction, rising sea levels caused by climate change and water pollution.

"ZSL, the international conservation charity behind Whipsnade Zoo, is working to restore wetland environments across Asia, Africa, in Amazonian flooded forests and even central London - where the team is helping to restore the Thames estuary - to help ensure the long-term survival of the many bird and marine species that call these incredible ecosystems home," Emily said.

Emily added that the brightly coloured flamingo flock also play an important role in educating the public through the conservation zoo's daily talks, helping to inspire the next generation of conservationists.

Visit the UK's largest conservation zoo this summer to see the flamboyance of flamingos alongside 10,000 other animals, this summer. Every ticket supports ZSL's vital science and conservation work around the globe. To book, visit: www.whipsnadezoo.org.



Eaton Bray Cricket Club



Results

June 10th Buckland & Aston Clinton 302-6. Eaton Bray 1st X1 282-6. Richard Osborne 68 Joe Braddon 58 Paul Harris 58. Buckland & Aston Clinton won by 20 runs.

June 10th Grumpy Monks 203 a/o. Jamie Osborne 3-50. Eaton Bray 2nd X1 203 a/o. Peter Robinson 57. Match tied.

June 11th Eaton Bray Sunday X1 179-6. Junaid Ashiq 59 Jaco Jacobs 57 n/o. Dunstable Town 180-6. Dunstable Town won by 4 wickets.

June 17th Eaton Bray 2nd X1 197-5. Owen Brown 83 n/o. Buckland & Aston Clinton 106 a/o. Ian Jones 3-5 Quinn Wardle 3-18. Eaton Bray 2nd X1 won by 91 runs.

June 18th. Whitwell 240-8. Fred Flack 3-51. Eaton Bray Sunday X1 124 a/o. Whitwell won by 116 runs.

June 22nd Studham 178-8. Eaton Bray Outlaws 122 a/o. Studham won by 56 runs.

June 24th Eaton Bray 1st X1 212 a/o. Andy Norris 52. Westcroft 213-5. Westcroft won by 5 wickets.

June 24th St Andrews 274-7. Eaton Bray 2nd X1 106 a/o. Owen Brown 52. St Andrews won by 168 runs.

June 25th Luton Town & Indians 140 a/o. Adam Raspas 4-24. Eaton Bray Sunday X1 144-6. Richard Osborne 50. Eaton Bray Sunday X1 won by 4 wickets.

June 29th Ivinghoe and Pitstone conceded to Eaton Bray Outlaws.

July 1st Eaton Bray 1st X1 115 a/o. Luton Caribbean 116-8. Quinn Wardle 3-39. Luton Caribbean won by 2 wickets.

July 1st Sher-E-Punjab 229-8. Peter Robinson 3-35. Eaton Bray 2nd X1 172-7. Sher-E-Punjab won by 57 runs.

July 2nd Eaton Bray Sunday X1 225-3. Ollie Harris 109 Quinn Wardle 87. Biggleswade 107 a/o. Quinn Wardle 5-12. Eaton Bray Sunday X1 won by 118 runs.

We are a family friendly cricket club situated at the Rye in Eaton Bray. New players of any age or ability are always welcome. The club run 2 senior sides in the FCCL on a Saturday and a senior team in the Beds League on Sunday plus a midweek T20 team. We also run 5 junior teams for ages 8-15 and a newly formed Ladies team.

We would like to thank our sponsors Meadow Marquees, Mlilys Matress, Fine & Country Estate Agents, The Westrope Butchery, Topps Tiles, SMSS Ltd and the Focus Magazine for their continued support.

Drop in and have a look.

Enjoy your cricket with Eaton Bray in 2023



St Mary's 100 Club

The following winners were drawn by a Coffee Morning Member at St Mary's Church on 8th July 2023

June 2023

1st prize – Robert Dickson

2nd prize – Florence Jeater

3rd prize – Chris Banks

July 2023

1st prize – Robert Dickson

2nd prize – Joan Fossey

3rd prize – Robert Dickson



Salvation Sound

Booth Place, Eaton Bray, LU6 2DR
01525 222087
eaton.bray@salvationarmy.org.uk



Time for harvest once again,
When we think of fruits and golden grain,
Yet we reap all through the year,
The harvest of the Lord's presence near,
From Him we have the gifts of friends,
Fellowship and fun,
Days spent relaxing under summer's sun,
The rich tapestry of autumn colours blend,
And lead us to the stillness,
Of snow-covered years end,
Onwards into springtime rain,
Harvest we reap once again,
For there with all the new- born things,
Another cycle of life begins,
All year round, sight and sound,
Scent and touch,
The good Lord gives to us so much,
Harvest is not just the thing we
gain,
By sowing seeds on God's good
plain,
The fruits of life whether within
our work or play,
Are there to gather every day,
So Lord, for the beauty of this
place,
Your creation of time and space,
I thank you. How can I not see,
And feel within the heart of me,
The greatness of Your hand,
When I behold the harvest,
As I walk this beloved land.

✍️ Maureen

The Salvation Army
Booth Place, Eaton Bray



Programme

Morning Worship	Sun 11am – 12pm
Coffee Morning (fortnightly)	Tues 10am – 12pm
Home League	Weds 2:30pm – 3:30pm
Champion's Club Age 5+ (term time only)	Weds 6:15pm – 7:15pm
Girls' Night Out (1 st Thurs of the month)	Thurs 7:30pm

For more information please call into the hall,
telephone: 01525 222087 or
contact us by email:
eaton.bray@salvationarmy.org.uk

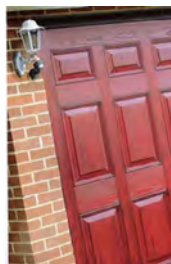


Premier Garage Doors & Gates



Quality Garage Doors

- ✓ Superb choice of designs in steel, timber and fibreglass
- ✓ Any size door made to your requirements
- ✓ Large selection of spares & fast repair service available
- ✓ New or existing doors converted to automatic
- ✓ Professionally fitted by own expert craftsmen
- ✓ Prompt free estimates & advice
- ✓ We cover all areas



(EST 1984)



Door & Hardware
Federation

raising standards



Unit 7, Sparrow Hall Farm, Leighton Road, Edlesborough LU6 2ES

01525 220212

www.premiergaragedoors.co.uk

JANES

FLOORING DIGITAL APPLIANCES CYCLES SERVICE

5th Generation Family Business est 1891

Serving the local villages & towns for over 130 years



JANES 1958
James 1910



Andy & Louise 1984



JANES 1935




Andy & Louise 2023


Appliances, Digital TVs, Carpets & Flooring
Are just some of the products and services that JANES now offer, with **good old-fashioned service with up to date products & advice.**

Starting out as JANES Boot Makers by Louise & Andy's great, great grandfather Ezra Janes as the local cobbler, the business has changed over 5 generations to what you see today on your High Street.

Read more about our history by scanning the QR Code below or visit our website

 www.janesltd.co.uk

 01525 220208

 4-6 High Street
Edlesborough
LU6 2HS

